

BID OF \_\_\_\_\_

**2019**

**PROPOSAL, CONTRACT, BOND AND SPECIFICATIONS**

**FOR**

**HAYWOOD DRIVE RECONSTRUCTION ASSESSMENT DISTRICT - 2019**

**CONTRACT NO. 8297**

**PROJECT NO. 11452**

**MUNIS NO. 11452**

**IN**

**MADISON, DANE COUNTY, WISCONSIN**

AWARDED BY THE COMMON COUNCIL  
MADISON, WISCONSIN ON \_\_\_\_\_

CITY ENGINEERING DIVISION  
1600 EMIL STREET  
MADISON, WISCONSIN 53713

<https://bidexpress.com/login>

**HAYWOOD DRIVE RECONSTRUCTION ASSESSMENT DISTRICT - 2019  
CONTRACT NO. 8297**

**INDEX**

SECTION A: ADVERTISEMENT FOR BIDS AND INSTRUCTIONS TO BIDDERS .....A-1

SECTION B: PROPOSAL SECTION .....B-1

SECTION C: SMALL BUSINESS ENTERPRISE ..... C-1

SECTION D: SPECIAL PROVISIONS..... D-1

SECTION E: BIDDER’S ACKNOWLEDGEMENT .....E-1

SECTION F: BEST VALUE CONTRACTING .....F-1

SECTION G: BID BOND ..... G-1

SECTION H: AGREEMENT ..... H-1

SECTION I: PAYMENT AND PERFORMANCE BOND .....I-1

This Proposal, and Agreement have  
been prepared by:

**CITY ENGINEERING DIVISION  
CITY OF MADISON  
MADISON, DANE COUNTY, WISCONSIN**



---

Robert F. Phillips, P.E., City Engineer

RFP: sms

# SECTION A: ADVERTISEMENT FOR BIDS AND INSTRUCTIONS TO BIDDERS

## REQUEST FOR BID FOR PUBLIC WORKS CONSTRUCTION CITY OF MADISON, WISCONSIN

### A BEST VALUE CONTRACTING MUNICIPALITY

PROJECT NAME:	HAYWOOD DRIVE RECONSTRUCTION ASSESSMENT DISTRICT - 2019
CONTRACT NO.:	8297
SBE GOAL	12%
BID BOND	5%
SBE PRE BID MEETING (1:00 P.M.)	FEBRUARY 1, 2019
PREQUALIFICATION APPLICATION DUE (2:00 P.M.)	JANUARY 31, 2019
BID SUBMISSION (2:00 P.M.)	FEBRUARY 7, 2019
BID OPEN (2:30 P.M.)	FEBRUARY 7, 2019
PUBLISHED IN WSJ	JANUARY 24 & JANUARY 31, 2019

SBE PRE BID MEETING: Representatives of the Affirmative Action Department will be present to discuss the Small Business Enterprise requirements at 1600 Emil Street, Madison Wisconsin.

PREQUALIFICATION APPLICATION: Forms are available on our website, [www.cityofmadison.com/business/pw/forms.cfm](http://www.cityofmadison.com/business/pw/forms.cfm). If not currently prequalified in the categories listed in Section A, an amendment to your Prequalification will need to be submitted prior to the same due date. Postmark is not applicable.

BIDS TO BE SUBMITTED by hand to 1600 EMIL ST., MADISON, WI 53713 or online at [www.bidexpress.com](http://www.bidexpress.com).

THE BID OPENING is at 1600 EMIL ST., MADISON, WI 53713.

#### STANDARD SPECIFICATIONS

The City of Madison's Standard Specifications for Public Works Construction - 2019 Edition, as supplemented and amended from time to time, forms a part of these contract documents as if attached hereto.

These standard specifications are available on the City of Madison Public Works website, [www.cityofmadison.com/Business/PW/specs.cfm](http://www.cityofmadison.com/Business/PW/specs.cfm).

The Contractor shall review these Specifications prior to preparation of proposals for the work to be done under this contract, with specific attention to Article 102, "BIDDING REQUIREMENTS AND CONDITIONS" and Article 103, "AWARD AND EXECUTION OF THE CONTRACT." For the convenience of the bidder, below are highlights of three subsections of the specifications.

#### SECTION 102.1: PRE-QUALIFICATION OF BIDDERS

In accordance with Wisconsin State Statutes 66.0901 (2) and (3), all bidders must submit to the Board of Public Works proof of responsibility on forms furnished by the City. The City requires that all bidders be qualified on a biennial basis.

Bidders must present satisfactory evidence that they have been regularly engaged in the type of work specified herein and they are fully prepared with necessary capital, materials, machinery and supervisory personnel to conduct the work to be contracted for to the satisfaction of the City. All bidders must be pre-qualified by the Board of Public Works for the type of construction on which they are bidding prior to the opening of the bid.

In accordance with Section 39.02(9)(a)l. of the General Ordinances, all bidders shall submit in writing to the Affirmative Action Division Manager of the City of Madison, a Certificate of Compliance or an Affirmative Action Plan at the same time or prior to the submission of the proof of responsibility forms.

The bidder shall be disqualified if the bidder fails to or refuses to, prior to opening of the bid, submit a Certificate of compliance, Affirmative Action Plan or Affirmative Action Data Update, as applicable, as defined by Section 39.02 of the General Ordinances (entitled Affirmative Action) and as required by Section 102.11 of the Standard Specifications.

#### SECTION 102.4 PROPOSAL

No bid will be accepted that does not contain an adequate or reasonable price for each and every item named in the Schedule of Unit Prices.

A lump sum bid for the work in accordance with the plans and specifications is required. The lump sum bid must be the same as the total amounts bid for the various items and it shall be inserted in the space provided.

All papers bound with or attached to the proposal form are considered a part thereof and must not be detached or altered when the proposal is submitted. The plans, specifications and other documents designated in the proposal form will be considered a part of the proposal whether attached or not.

A proposal submitted by an individual shall be signed by the bidder or by a duly authorized agent. A proposal submitted by a partnership shall be signed by a member/partner or by a duly authorized agent thereof. A proposal submitted by a corporation shall be signed by an authorized officer or duly authorized registered agent of such corporation, and the proposal shall show the name of the State under the laws of which such corporation was chartered. The required signatures shall in all cases appear in the space provided thereof on the proposal.

Each proposal shall be placed, together with the proposal guaranty, in a sealed envelope, so marked as to indicate name of project, the contract number or option to which it applies, and the name and address of the Contractor or submitted electronically through Bid Express ([www.bidexpress.com](http://www.bidexpress.com)). Proposals will be accepted at the location, the time and the date designated in the advertisement. Proposals received after the time and date designated will be returned to the bidder unopened.

#### SECTION 102.5: BID DEPOSIT (PROPOSAL GUARANTY)

All bids, sealed or electronic, must be accompanied with a Bid Bond (City of Madison form) equal to at least 5% of the bid or a Certificate of Annual/Biennial Bid Bond or certified check, payable to the City Treasurer. Bid deposit of the successful bidders shall be returned within forty-eight (48) hours following execution of the contract and bond as required.

#### MINOR DISCREPENCIES

Bidder is responsible for submitting all forms necessary for the City to determine compliance with State and City bidding requirements. Notwithstanding any language to the contrary contained herein, the City may exercise its discretion to allow bidders to correct or supplement submissions after bid opening, if the minor discrepancy, bid irregularity or omission is insignificant and not one related to price, quality, quantity, time of completion or performance of the contract.

**Bidders for this Contract(s) must be Pre-Qualified for at least one of the following type(s) of construction denoted by an**

Building Demolition

- 101  Asbestos Removal
- 120  House Mover

- 110  Building Demolition

Street, Utility and Site Construction

- 201  Asphalt Paving
- 205  Blasting
- 210  Boring/Pipe Jacking
- 215  Concrete Paving
- 220  Con. Sidewalk/Curb & Gutter/Misc. Flat Work
- 221  Concrete Bases and Other Concrete Work
- 222  Concrete Removal
- 225  Dredging
- 230  Fencing
- 235  Fiber Optic Cable/Conduit Installation
- 240  Grading and Earthwork
- 241  Horizontal Saw Cutting of Sidewalk
- 242  Infrared Seamless Patching
- 245  Landscaping, Maintenance
- 246  Ecological Restoration
- 250  Landscaping, Site and Street
- 251  Parking Ramp Maintenance
- 252  Pavement Marking
- 255  Pavement Sealcoating and Crack Sealing
- 260  Petroleum Above/Below Ground Storage Tank Removal/Installation
- 262  Playground Installer

- 265  Retaining Walls, Precast Modular Units
- 270  Retaining Walls, Reinforced Concrete
- 275  Sanitary, Storm Sewer and Water Main Construction
- 276  Sawcutting
- 280  Sewer Lateral Drain Cleaning/Internal TV Insp.
- 285  Sewer Lining
- 290  Sewer Pipe Bursting
- 295  Soil Borings
- 300  Soil Nailing
- 305  Storm & Sanitary Sewer Laterals & Water Svc.
- 310  Street Construction
- 315  Street Lighting
- 318  Tennis Court Resurfacing
- 320  Traffic Signals
- 325  Traffic Signing & Marking
- 332  Tree pruning/removal
- 333  Tree, pesticide treatment of
- 335  Trucking
- 340  Utility Transmission Lines including Natural Gas, Electrical & Communications
- 399  Other \_\_\_\_\_

Bridge Construction

- 501  Bridge Construction and/or Repair

Building Construction

- 401  Floor Covering (including carpet, ceramic tile installation, rubber, VCT)
- 402  Building Automation Systems
- 403  Concrete
- 404  Doors and Windows
- 405  Electrical - Power, Lighting & Communications
- 410  Elevator - Lifts
- 412  Fire Suppression
- 413  Furnishings - Furniture and Window Treatments
- 415  General Building Construction, Equal or Less than \$250,000
- 420  General Building Construction, \$250,000 to \$1,500,000
- 425  General Building Construction, Over \$1,500,000
- 428  Glass and/or Glazing
- 429  Hazardous Material Removal
- 430  Heating, Ventilating and Air Conditioning (HVAC)
- 433  Insulation - Thermal
- 435  Masonry/Tuck pointing

- 437  Metals
- 440  Painting and Wallcovering
- 445  Plumbing
- 450  Pump Repair
- 455  Pump Systems
- 460  Roofing and Moisture Protection
- 464  Tower Crane Operator
- 461  Solar Photovoltaic/Hot Water Systems
- 465  Soil/Groundwater Remediation
- 466  Warning Sirens
- 470  Water Supply Elevated Tanks
- 475  Water Supply Wells
- 480  Wood, Plastics & Composites - Structural & Architectural
- 499  Other \_\_\_\_\_

State of Wisconsin Certifications

- 1  Class 5 Blaster - Blasting Operations and Activities 2500 feet and closer to inhabited buildings for quarries, open pits and road cuts.
- 2  Class 6 Blaster - Blasting Operations and Activities 2500 feet and closer to inhabited buildings for trenches, site excavations, basements, underwater demolition, underground excavations, or structures 15 feet or less in height.
- 3  Class 7 Blaster - Blasting Operations and Activities for structures greater than 15 ' in height, bridges, towers, and any of the objects or purposes listed as "Class 5 Blaster or Class 6 Blaster".
- 4  Petroleum Above/Below Ground Storage Tank Removal and Installation (Attach copies of State Certifications.)
- 5  Hazardous Material Removal (Contractor to be certified for asbestos and lead abatement per the Wisconsin Department of Health Services, Asbestos and Lead Section (A&LS).) See the following link for application: [www.dhs.wisconsin.gov/Asbestos/Cert](http://www.dhs.wisconsin.gov/Asbestos/Cert). State of Wisconsin Performance of Asbestos Abatement Certificate must be attached.
- 6  Certification number as a Certified Arborist or Certified Tree Worker as administered by the International Society of Arboriculture
- 7  Pesticide application (Certification for Commercial Applicator For Hire with the certification in the category of turf and landscape (3.0) and possess a current license issued by the DATCP)
- 8  State of Wisconsin Master Plumbers License.

## SECTION B: PROPOSAL

Please refer to the  
Bid Express Website  
at <https://bidexpress.com>  
look up contract number  
and go to  
Section B: Proposal Page

You can access all City of Madison bid solicitations for FREE at [www.bidexpress.com](http://www.bidexpress.com)

Click on the "Register for Free" button and follow the instructions to register your company and yourself. You will be asked for a payment subscription preference, since you may wish to bid online someday. Simply choose the method to pay on a 'per bid' basis. This requires no payment until / unless you actually bid online. You can also choose the monthly subscription plan at this time. You will, however, be asked to provide payment information. Remember, you can change your preference at anytime. You will then be able to complete your free registration and have full access to the site. Your free access does not require completion of the 'Digital ID' process, so you will have instant access for viewing and downloading. To be prepared in case you ever do wish to bid online, you may wish to establish your digital ID also, since you cannot bid without a Digital ID.

If you have any problems with the free registration process, you can call the bidexpress help team, toll free at 1-888-352-2439 (option 1, option1).

## **SECTION C: SMALL BUSINESS ENTERPRISE**

### **Instructions to Bidders City of Madison SBE Program Information**

#### **2 Small Business Enterprise (SBE) Program Information**

##### **2.1 Policy and Goal**

The City of Madison reaffirms its policy of nondiscrimination in the conduct of City business by maintaining a procurement process which remains open to all who have the potential and ability to sell goods and services to the City. It is the policy of the City of Madison to allow Small Business Enterprises (SBE) maximum feasible opportunity to participate in City of Madison contracting. The bidder acknowledges that its bid has been submitted in accordance with the SBE program and is for the public's protection and welfare.

Please refer to the "ADVERTISEMENT FOR BIDS" for the goal for the utilization of SBEs on this project. SBEs may participate as subcontractors, vendors and/or suppliers, which provide a commercially useful function. The dollar value for SBE suppliers or 'materials only' vendors shall be discounted to 60% for purposes of meeting SBE goals.

A bidder which achieves or exceeds the SBE goal will be in compliance with the SBE requirements of this project. In the event that the bidder is unable to achieve the SBE goal, the bidder must demonstrate that a good faith effort to do so was made. Failure to either achieve the goal or demonstrate a good faith effort to do so will be grounds for the bidder being deemed a non-responsible contractor ineligible for award of this contract.

A bidder may count towards its attainment of the SBE goal only those expenditures to SBEs that perform a commercially useful function. For purposes of evaluating a bidder's responsiveness to the attainment of the SBE goal, the contract participation by an SBE is based on the percentage of the total base bid proposed by the Contractor. The total base bid price is inclusive of all addenda.

Work performed by an SBE firm in a particular transaction can be counted toward the goal only if it involves a commercially useful function. That is, in light of industry practices and other relevant considerations, does the SBE firm have a necessary and useful role in the transaction, of a kind for which there is a market outside the context of the SBE Program, or is the firm's role a superfluous step added in an attempt to obtain credit towards goals? If, in the judgment of the Affirmative Action Division, the SBE firm will not perform a commercially useful function in the transaction, no credit towards goals will be awarded.

The question of whether a firm is performing a commercially useful function is completely separate from the question of whether the firm is an eligible SBE. A firm is eligible if it meets the definitional criteria and ownership and control requirements, as set forth in the City of Madison's SBE Program.

If the City of Madison determines that the SBE firm is performing a commercially useful function, then the City of Madison must then decide what that function is. If the commercially useful function is that of an SBE vendor / supplier that regularly transacts business with the respective product, then the City of Madison will count 60% of the value of the product supplied toward SBE goals.

To be counted, the SBE vendor / supplier must be engaged in selling the product in question to the public. This is important in distinguishing an SBE vendor / supplier, which has a regular trade with a variety of customers, from a firm which performs supplier-like functions on an ad hoc basis or for only one or two contractors with whom it has a special relationship.

A supplier of bulk goods may qualify as an eligible SBE vendor / supplier if it either maintains an inventory or owns or operates distribution equipment. With respect to the distribution equipment; e.g., a fleet of trucks, the term "operates" is intended to cover a situation in which the supplier leases the equipment on a regular basis for its entire business. It is not intended to cover a situation in which the firm simply provides drivers for trucks owned or leased by another party; e.g., a prime contractor, or leases such a party's trucks on an ad hoc basis for a specific job.

If the commercially useful function being performed is not that of a qualified SBE vendor / supplier, but rather that of delivery of products, obtaining bonding or insurance, procurement of personnel, acting as a broker or manufacturer's representative in the procurement of supplies, facilities, or materials, etc., only the fees or commissions will apply towards the goal.

For example, a business that simply transfers title of a product from manufacturer to ultimate purchaser; e. g., a sales representative who re-invoices a steel product from the steel company to the Contractor, or a firm that puts a product into a container for delivery would not be considered a qualified SBE vendor / supplier. The Contractor would not receive credit based on a percentage of the cost of the product for working with such firms.

Concerning the use of services that help the Contractor obtain needed supplies, personnel, materials or equipment to perform a contract: only the fee received by the service provider will be counted toward the goal. For example, use of a SBE sales representative or distributor for a steel company, if performing a commercially useful function at all, would entitle the Contractor receiving the steel to count only the fee paid to the representative or distributor toward the goal. This provision would also govern fees for professional and other services obtained expressly and solely to perform work relating to a specific contract.

Concerning transportation or delivery services: if an SBE trucking company picks up a product from a manufacturer or a qualified vendor / supplier and delivers the product to the Contractor, the commercially useful function it is performing is not that of a supplier, but simply that of a transporter of goods. Unless the trucking company is itself the manufacturer or a qualified vendor / supplier in the product, credit cannot be given based on a percentage of the cost of the product. Rather, credit would be allowed for the cost of the transportation service.

The City is aware that the rule's language does not explicitly mention every kind of business that may contribute work on this project. In administering these programs, the City would, on a case-by-case basis, determine the appropriate counting formula to apply in a particular situation.

## **2.2 Contract Compliance**

Questions concerning the SBE Program shall be directed to the Contract Compliance Officer of the City of Madison Department of Civil Rights, Affirmative Action Division, 210 Martin Luther King, Jr. Blvd., Room 523, Madison, WI 53703; telephone (608) 266-4910.



## 2.3 Certification of SBE by City of Madison

The Affirmative Action Division maintains a directory of SBEs which are currently certified as such by the City of Madison. Contact the Contract Compliance Officer as indicated in Section 2.2 to receive a copy of the SBE Directory or you may access the SBE Directory online at [www.cityofmadison.com/dcr/aaTBDDir.cfm](http://www.cityofmadison.com/dcr/aaTBDDir.cfm).

All contractors, subcontractors, vendors and suppliers seeking SBE status must complete and submit the **Targeted Business Certification Application** to the City of Madison Affirmative Action Division by the time and date established for receipt of bids. A copy of the Targeted Business Certification Application is available by contacting the Contract Compliance Officer at the address and telephone indicated in Section 2.2 or you may access the Targeted Business Certification Application online at [www.cityofmadison.com/dcr/aaTBDDir.cfm](http://www.cityofmadison.com/dcr/aaTBDDir.cfm). Submittal of the Targeted Business Certification Application by the time specified does not guarantee that the applicant will be certified as a SBE eligible to be utilized towards meeting the SBE goal for this project.

## 2.4 Small Business Enterprise Compliance Report

### 2.4.1 Good Faith Efforts

Bidders shall take all necessary affirmative steps to assure that SBEs are utilized when possible and that the established SBE goal for this project is achieved. A contractor who self performs a portion of the work, and is pre-qualified to perform that category of work, may subcontract that portion of the work, but shall not be required to do so. When a bidder is unable to achieve the established SBE goal, the bidder must demonstrate that a good faith effort to do so was made. Such a good faith effort should include the following:

- 2.4.1.1 Attendance at the pre-bid meeting.
- 2.4.1.2 Using the City of Madison's directory of certified SBEs to identify SBEs from which to solicit bids.
- 2.4.1.3 Assuring that SBEs are solicited whenever they are potential sources.
- 2.4.1.4 Referring prospective SBEs to the City of Madison Affirmative Action Division for certification.
- 2.4.1.5 Dividing total project requirements into smaller tasks and/or quantities, where economically feasible, to permit maximum feasible SBE participation.
- 2.4.1.6 Establishing delivery schedules, where requirements permit, which will encourage participation by SBEs.
- 2.4.1.7 Providing SBEs with specific information regarding the work to be performed.
- 2.4.1.8 Contacting SBEs in advance of the deadline to allow such businesses sufficient time to prepare a bid.
- 2.4.1.9 Utilizing the bid of a qualified and competent SBE when the bid of such a business is deemed reasonable (i.e. 5% above the lowest bidder), although not necessarily low.
- 2.4.1.10 Contacting SBEs which submit a bid, to inquire about the details of the bid and confirm that the scope of the work was interpreted as intended.
- 2.4.1.11 Completion of Cover Page (page C-6), Summary Sheet (page C-7) and SBE Contact Reports (pages C-8 and C9) if applicable.

## 2.4.2 Reporting SBE Utilization and Good Faith Efforts

The Small Business Enterprise Compliance Report is to be submitted by the bidder with the bid: This report is due by the specified bid closing time and date. Bids submitted without a completed SBE Compliance Report as outlined below may be deemed non-responsible and the bidder ineligible for award of this contract. Notwithstanding any language to the contrary contained herein, the City may exercise its discretion to allow bidders to correct or supplement submissions after bid opening, if the minor discrepancy, bid irregularity or omission is insignificant and not one related to price, quality, quantity, time of completion, performance of the contract, or percentage of SBE utilization.

2.4.2.1 If the Bidder meets or exceeds the goal established for SBE utilization, the Small Business Enterprise Compliance Report shall consist of the following:

- 2.4.2.1.1 **Cover Page**, Page C-6; and
- 2.4.2.1.2 **Summary Sheet**, C-7.

2.4.2.2 If the bidder does not meet the goal established for SBE utilization, the Small Business Enterprise Compliance Report shall consist of the following:

- 2.4.2.2.1 **Cover Page**, Page C-6;
- 2.4.2.2.2 **Summary Sheet**, C-7; and
- 2.4.2.2.3 **SBE Contact Report**, C-8 and C-9. (A separate Contact Report must be completed for each applicable SBE which is not utilized.)

## 2.5 Appeal Procedure

A bidder which does not achieve the established goal and is found non-responsible for failure to demonstrate a good faith effort to achieve such goal and subsequently denied eligibility for award of contract may appeal that decision to the Small Business Enterprises Appeals Committee. All appeals shall be made in writing, and shall be delivered to and received by the City Engineer no later than 4:30 PM on the third business day following the bidder's receipt of the written notification of ineligibility by the Affirmative Action Division Manager. Postmark not acceptable. The notice of appeal shall state the basis for the appeal of the decision of the Affirmative Action Division Manager. The Appeal shall take place in accordance with Madison General Ordinance 33.54.

## 2.6 SBE Requirements After Award of the Contract

The successful bidder shall identify SBE subcontractors, suppliers and vendors on the subcontractor list in accordance with the specifications. The Contractor shall submit a detailed explanation of any variances between the listing of SBE subcontractors, vendors and/or suppliers on the subcontractor list and the Contractor's SBE Compliance Report for SBE participation.

No change in SBE subcontractors, vendors and/or suppliers from those SBEs indicated in the SBE Compliance Report will be allowed without prior approval from the Engineer and the Affirmative Action Division. The contractor shall submit in writing to the City of Madison Affirmative Action Division a request to change any SBE citing specific reasons which necessitate such a change. The Affirmative Action Division will use a general test of reasonableness in approving or rejecting the contractor's request for change. If the request is approved, the Contractor will make every effort to utilize another SBE if available.

The City will monitor the project to ensure that the actual percentage commitment to SBE firms is carried out.

## **2.7 SBE Definition and Eligibility Guidelines**

A Small Business Enterprise is a business concern awarded certification by the City of Madison. For the purposes of this program a Small Business Enterprise is defined as:

- A. An independent business operated under a single management. The business may not be a subsidiary of any other business and the stock or ownership may not be held by any individual or any business operating in the same or a similar field. In determining whether an entity qualifies as a SBE, the City shall consider all factors relevant to being an independent business including, but not limited to, the date the business was established, adequacy of its resources for the work in which it proposes to involve itself, the degree to which financial, equipment leasing and other relationships exist with other ineligible firms in the same or similar lines of work. SBE owner(s) shall enjoy the customary incidents of ownership and shall share in the risks and profits commensurate with their enjoyment interests, as demonstrated by an examination of the substance rather than form or arrangements that may be reflected in its ownership documents.
- B. A business that has averaged no more than \$4.0 million in annual gross receipts over the prior three year period and the principal owner(s) do not have a personal net worth in excess of \$1.32 million.

Firm and/or individuals that submit fraudulent documents/testimony may be barred from doing business with the City and/or forfeit existing contracts.

SBE certification is valid for one (1) year unless revoked.

**HAYWOOD DRIVE RECONSTRUCTION ASSESSMENT DISTRICT - 2019  
CONTRACT NO. 8297**

**Small Business Enterprise Compliance Report**

**This information may be submitted electronically through  
Bid Express or submitted with bid in sealed envelope.**

**Cover Sheet**

Prime Bidder Information

Company: \_\_\_\_\_

Address: \_\_\_\_\_

Telephone Number: \_\_\_\_\_ Fax Number: \_\_\_\_\_

Contact Person/Title: \_\_\_\_\_

Prime Bidder Certification

I, \_\_\_\_\_, \_\_\_\_\_ of  
Name Title

\_\_\_\_\_ certify that the information  
Company

contained in this SBE Compliance Report is true and correct to the best of my knowledge and belief.

\_\_\_\_\_  
Witness' Signature

\_\_\_\_\_  
Bidder's Signature

\_\_\_\_\_  
Date



**HAYWOOD DRIVE RECONSTRUCTION ASSESSMENT DISTRICT - 2019  
CONTRACT NO. 8297**

**Small Business Enterprise Compliance Report**

**SBE Contact Report**

Submit separate copy of this form for each SBE which you are not able to utilize towards meeting the SBE goal for this project. Attach separate sheets if necessary.

SBE Information

Company: \_\_\_\_\_

Address: \_\_\_\_\_

Telephone Number: \_\_\_\_\_

Contact Person/Title: \_\_\_\_\_

1. Outline below all efforts to solicit a bid from the above SBE. Include date, means of contact, who from your company made this contact and the result.

\_\_\_\_\_  
\_\_\_\_\_  
\_\_\_\_\_

2. Describe the information provided to the aforementioned SBE regarding the scope of work for which he/she was to provide a bid.

\_\_\_\_\_  
\_\_\_\_\_  
\_\_\_\_\_

Is this the same scope of work on which the subcontractor you intend to utilize based his/her bid?

Yes     No

3. Did this SBE submit a bid?     Yes     No

4. Is the General Contractor pre-qualified to self-perform this category of work?

Yes     No

5. If you responded "Yes" to Question 3, please check the items below which apply and provide the requested detail. If you responded "No" to Question 3, please skip ahead to item 6 below.

The SBE listed above is unavailable for work on this project for the following reasons. Provide specific detail for this conclusion.

---

---

The SBE listed above is unqualified for work on this project. Provide specific details for this conclusion.

---

---

The SBE listed above provided a price that was unreasonable (i.e. more than 5% above the lowest bidder). Provide specific detail for this conclusion including the SBE's price and the price of the subcontractor you intend to utilize.

---

---

A contract with the SBE listed above may constitute a breach of the bidder's collective bargaining agreements. Provide specific detail for this conclusion including, but not limited to, correspondence from the SBE indicating it will not sign a project labor agreement and/or correspondence from the applicable trade union indicating a project labor agreement will not be allowed at the time of project bidding.

---

---

Other; please specify reason(s) other than listed above which made it impossible for you to utilize this SBE on this project.

---

---

6. Describe any other good faith efforts:

---

---

## SECTION D: SPECIAL PROVISIONS

### HAYWOOD DRIVE RECONSTRUCTION ASSESSMENT DISTRICT - 2019 CONTRACT NO. 8297

It is the intent of these Special Provisions to set forth the final contractual intent as to the matter involved and shall prevail over the Standard Specifications and plans whenever in conflict therewith. In order that comparisons between the Special Provisions can be readily made, the numbering system for the Special Provisions is equivalent to that of the Specifications.

Whenever in these Specifications the term "Standard Specifications" appears, it shall be taken to refer to the City of Madison Standard Specifications for Public Works Construction and Supplements thereto.

#### **SECTION 102.11: BEST VALUE CONTRACTING**

This Contract shall be considered a Best Value Contract if the Contractor's bid is equal to or greater than \$62,500 for a single trade contract; or equal to or greater than \$306,000 for a multi-trade contract pursuant to MGO 33.07(7).

#### **ARTICLE 104 SCOPE OF WORK**

The work under this contract shall include, but is not limited to, replacing sanitary and storm sewer, removing and replacing concrete curb and gutter, sidewalk and drive aprons, excavation cut, crushed aggregate base course, and asphalt pavement as noted in the specifications and on the plans.

**The Contractor shall view all sites prior to bidding** to become familiar with the existing conditions. It will be the responsibility of the Contractor to work with the utilities located in the right of way to resolve conflicts during the construction process.

Haywood Drive – North Wingra Drive to North Park Street

Work shall include spot replacement of the sanitary sewer, lateral installation and storm sewer improvements. New Curb & gutter, drive aprons and sidewalks shall be replaced where necessary to facilitate the storm sewer and sanitary sewer or are in poor condition. Haywood Drive will be reconstructed with excavation cut necessary to install 12" of new crushed aggregate base course and new Asphalt pavement. The street will be paved with 2.5" Bituminous lower layer, 3 LT 58-28S and 2.0" Bituminous upper layer, 4 LT 58-28S. The Intersection of North Wingra Drive shall be milled 2" and paved with 2.0" Bituminous upper layer, 4 LT 58-28S as shown on the plan.

#### **SECTION 104.4 INCREASED OR DECREASED QUANTITIES**

The Contractor shall note that some bid item quantities may increase or decrease based on what is encountered in the field. If the actual field conditions vary from the plan quantity, no additional compensation shall be given for increasing or decreasing quantities. Any overruns shall be paid for under the appropriate bid item(s) without any penalty or change to the bid price for the associated bid item. The Contractor shall not be reimbursed for any deletions to the contract. No change to the unit bid price will be allowed for changes to the quantities.

The Contractor shall note that the bid items for sidewalk removal and replacement may increase or decrease based on what is encountered in the field. It was anticipated that 106 SF of sidewalk removal and replacement would be required for each of the sanitary lateral replacements.



## **SECTION 104.10      CLEANING UP**

Excess concrete from finishing operations and from spillage on adjacent sidewalk and curb & gutter shall be removed immediately. Excess concrete or mortar from the finishing operation and spillage into SASs and inlets shall be removed immediately.

## **SECTION 105.12      COOPERATION BY THE CONTRACTOR**

The Contractor shall use care around existing trees, plantings, fences, walls, steps and driveways that are indicated on the plans to remain. Damage to these items during construction shall be repaired or replaced at the Contractor's expense. No trees, other than those shown on the plan to be removed, shall be cut without the approval of the Engineer and the City Forester; the abutting property owners shall be notified in accordance with the City's Administrative Procedure Memorandum No. 6-2.

The Contractor shall maintain access for property owners, mail delivery and garbage/recycling pickup for all properties in the project area. All private storm sewer discharges shall be maintained for all properties in the project area.

All commercial accesses on Haywood Drive shall be maintained at all times except for when work is directly in front of the driveways. The Contractor shall coordinate with business owners for business deliveries.

The Contractor shall be aware there are registered Wisconsin Historical Society archeological areas within the construction limits. The Contractor shall work closely with City Engineering's Archeological contact, Phil Gaebler at 608-266-4059 or [pgaebler@cityofmadison.com](mailto:pgaebler@cityofmadison.com), to coordinate any archeological on site observations required during excavation.

### **Coordination with Utilities**

Work in this contract may require utility relocations to install the new sanitary and storm sewer main. It will be the responsibility of the Contractor to work with the utilities located in the right of way to resolve conflicts during the construction process and provide working area for installation of new facilities.

Madison Metropolitan Sewerage District (MMSD) will be replacing their 24" diameter gravity sewer with a 36" diameter gravity sewer on Haywood Drive from North Wingra Drive to West Shore Drive. This public works contract shall not start until the MMSD project is complete. The project is anticipated to be completed by the end of June or early July. Please coordinate this contract with The MMSD project Engineer, Jen Hurlebaus, P.E. at 608-222-1201 Ext. 248 or [JenH@madsewer.org](mailto:JenH@madsewer.org)

There are several existing utilities located within the project limits that are to remain. Several of these facilities are old and will require care when working near them, especially existing AT&T 9 duct package and the AT&T clay pipe and copper pipe. The Contractor will be responsible for coordination and providing work space for any conflict resolution work that will need to be performed by the private utility companies.

### **Madison Gas & Electric (Gas)**

Holly Powell at (608) 252-7214 or [hpowell@mg.com](mailto:hpowell@mg.com)

### **Madison Gas & Electric (Electric)**

Mark Bohm at (608) 252- 4730 or [mbohm@mge.com](mailto:mbohm@mge.com)

### **AT&T**

Carol Anason at (608) 888-5557 or [g46926@att.com](mailto:g46926@att.com)

**SECTION 107.1            PUBLIC CONVENIENCE AND SAFETY**

Access to businesses and commercial driveways shall be maintained at all times. The Contractor shall coordinate with parking lot property owners to maintain access and notify residents of access routes.

The Contractor shall properly barricade and light all work areas. Sidewalk forms, form pins and other items incidental to the work shall not be left or stored on the sidewalk or in the sidewalk area.

The Contractor shall backfill along both sides of the newly poured sidewalk immediately following removal of the sidewalk forms.

Engineer shall have the final decision on schedule of all work.

**SECTION 107.2            PROTECTION AND RESTORATION OF PROPERTY AND PROPERTY OWNERS**

Care shall be taken not to disturb property irons, sod areas and retaining walls on private property. Sidewalk forms, form pins and other items incidental to the work shall, at no time, be placed on private property.

**SECTION 107.6            DUST PROOFING**

The Contractor shall take all necessary steps to control dust arising from operations connected with this contract. When ordered by the Engineer, the Contractor shall dust proof the construction area by using power sweepers and water. Dust proofing shall be incidental with operations connected with this contract.

**SECTION 107.7            MAINTENANCE OF TRAFFIC**

All signing and barricading shall conform to Part VI of the Federal Highways Administrations "Manual on Uniform Traffic Control Devices" (MUTCD), the State of Wisconsin Standard Facilities Development Manual (including Chapter 16 – Standard Detail Drawings) and the City of Madison Standards for sidewalk and bikeway closures.

The Contractor shall submit an acceptable Traffic Control Plan to the office of the City Traffic Engineer, a minimum of five (5) working days, prior to the pre-construction meeting. The Traffic Control Plan shall be sent to [tmohr@cityofmadison.com](mailto:tmohr@cityofmadison.com). The Traffic Control Plan shall include any necessary signing and phasing schedule with the dates of lane closures. The Traffic Engineering Division will assist the contractor in determining acceptable lane closures and detours (if needed), if the preliminary Traffic Control plan is submitted to the office of the City Traffic Engineer, at least 10 working days prior to the pre-construction meeting.

Haywood Drive may be closed to through traffic while the street is under construction. Two lanes of traffic must be maintained on North Wingra Drive at all time, except during paving operations. Work within the Wingra Drive intersection shall be limited to off-peak traffic times--8:30 a.m. to 4:00 p.m. Flaggers shall be used during the paving operation to maintain two way traffic on North Wingra Drive.

For all work on South Park Street for the abandonment of the MMSD sewer access structures peak hour restrictions shall apply. Peak hours shall be defined as Monday through Friday between the hours of 7 A.M. and 9 A.M. and 3 P.M. to 6 P.M. The Contractor shall only close one lane in each direction during the non-peak hours and the closure shall conform to the MUTCD. The Contractor shall also have several flaggers available and on site when working on South Park Street to assist in the traffic control. Electronic, flashing arrow boards shall be in place at any lane closure on South Park Street.

Maintain local and emergency vehicle access at all times.

Traffic Control shall be measured as a lump sum. Payment for the Traffic Control is full compensation for constructing, assembling, hauling, erecting, re-erecting, maintaining, restoring, and removing non-permanent traffic signs, drums, barricades, tubular markers and similar control devices, including arrow boards, for providing, placing, and maintaining work zone. Maintaining shall include replacing damaged or stolen traffic control devices. Temporary pavement markings and electronic message boards shall be paid for as separate bid items. Traffic control to install temporary or permanent pavement markings shall be included in the Traffic Control Lump Sum Bid Item.

Contractor shall supply all necessary mounting hardware and supports for signing. This shall also include covering and uncovering any conflicting overhead signs during the project. Contractor shall display all signing so as to be easily viewed by all users. Contractor shall mount traffic control on posts or existing poles or drive posts whenever possible. Existing poles may be used with approval of Construction Engineer. Contractor shall inspect traffic control daily to ensure all traffic control remains in place during the project.

The traffic control plan may need to be altered as conditions change in the field or as unexpected conditions occur. This shall include relocating existing traffic control or providing additional traffic control. This should be considered incidental to providing traffic control for the project.

The work areas shall be backfilled, plated, or protected by traffic control devices during non-working hours. If steel plates are used, the Contractor shall notify the City of Madison Streets Division, 266-4681, one working day prior to placement of the plates.

Type A warning lights shall be installed on all barricades used in the project per State of Wisconsin S.D.D. 15C2-4B. Contractor shall also place Type C warning lights on any barrels used to taper traffic or lane closures.

All temporary inlet or structure plating for traffic control phasing shall be considered incidental to the traffic control bid item.

Maintain Access to all properties along the project at all times. This includes local residents, businesses and emergency vehicles. Notify residents and businesses in writing at least 72 hours prior to restricting access or closing any driveway.

Contractor shall notify the City of Madison Police Department, Fire Department, Madison Metro, and Traffic Engineering 48 hours in advance of all switchovers of traffic lanes and closures of streets. Notifications must be given by 4:00 P.M. on Thursday for any such work to be done on the following Monday. Notify Madison Metro one week prior to traffic switches, street closures, and reopening the road to through traffic for bus routing. Madison Metro contact is Tim Sobota (608) 261-4289.

Maintain sidewalk on one side at all times and both sides whenever possible. If sidewalk must be closed for construction purposes, contractor shall ensure that sidewalk on opposite side of the street is open and that all crosswalks at the end of the closed sidewalk block are fully open. Sidewalk closures shall be signed at the crosswalks prior to the closure. Sidewalk access to all businesses shall remain open from at least one end of a block at all times. Sidewalks shall be fully open during non-working hours except where necessary to enable sidewalk to cure.

Construction equipment and materials are not to be stored within the street right-of-way that is open to traffic during non-working hours.

Contractor is responsible for obtaining and installing temporary no parking signs to facilitate traffic control plan or as necessary to complete the work within the contract. The contractor shall contact John Villareal with the City of Madison Parking Utility (608-267-8756) at least 3 working days prior to needing the signs. Contractor shall post signs in accordance with the City of Madison Police Department Guidelines for temporary no parking restrictions for construction or special events. The guidelines can be found at the link listed below. This shall be considered incidental to the traffic control lump sum bid item.

[http://www.cityofmadison.com/business/pw/documents/guidelines\\_temporarynoparkingrestrictions.pdf](http://www.cityofmadison.com/business/pw/documents/guidelines_temporarynoparkingrestrictions.pdf)

The Contractor shall not remove traffic signs. For removal or replacement of traffic and parking signs, contact the City of Madison Traffic Engineering Field Operations, 1120 Sayle Street, 266-4767, 8:00 a.m. to 4:00 p.m., a minimum of 2 working days in advance of when any existing signs need to be removed. This service is provided free of charge. If the contractor removes the signs, the contractor will be billed for the reinstallation of, and any damage to, the signing equipment. The contractor shall notify The City of Madison Traffic Engineering Field Operations, 1120 Sayle Street, 266-4767 upon completion of final landscaping to have permanent signs reinstalled. The contractor shall expect a minimum of seven working days to have permanent signs reinstalled. The contractor shall leave in place all necessary traffic control until given notice by the construction engineer that permanent signing is in place and temporary traffic control may be removed.

Contact Tom Mohr, Traffic Engineering Division, [tmohr@cityofmadison.com](mailto:tmohr@cityofmadison.com), 267-8725, with any questions concerning these traffic control specifications.

## **SECTION 108.2      PERMITS**

The Contractor shall notify Ray Schneider at (608) 347-3628 or [rays@madsewer.org](mailto:rays@madsewer.org) 5 days prior to installing laterals connecting to the MMSD sewer or for any City sewer mains connected to MMSD facilities. Permit fees associated with connection to MMSD facilities will be the responsibility of the contractor. MMSD has indicated that the fee will be \$3375.00.

The City of Madison has obtained a City of Madison Erosion Control Permit and has submitted a DNR WRAPP Water Resources Application for Project Permit (formerly known as Notice of Intent (NOI) to obtain coverage under a Construction Site General Permit.

The Contractor shall meet the conditions of the permits by properly installing and maintaining the erosion control measures shown on the plans, specified in these Special Provisions, or as directed by the Construction Engineer or his designees. This work will be paid for under the appropriate contract bid items or, if appropriate items are not included in the contract, shall be paid for as Extra Work. A copy of the permit is available at the City of Madison, Engineering Division office.

This permit covers trench dewatering to a maximum of 70 gallons/minute from the project, provided appropriate control measures are in place. The City's obtaining this permit is not intended to be exhaustive of all permits that may be required to be obtained by the Contractor for construction of this project. It shall be the responsibility of the Contractor to identify and obtain any other permits needed for construction.

The Contractor may encounter contaminated soils and/or groundwater. The Contractor will be required to obtain a permit from the City of Madison for discharging to public sanitary.

The Contractor shall refer to section 210.6 Erosion Control Implementation and Enforcement for additional information on the requirements regarding this topic.

## **SECTION 109.2      PROSECUTION OF THE WORK**

The Contractor shall coordinate all work with the MMSD project that is occurring prior to the public works contract. It is anticipated the MMSD contract will be complete by the end of June or early July. The time of completion shall be **November 15, 2019**. Once construction starts, the contractor shall have **SEVENTY-FIVE (75) CALENDAR DAYS** to complete the work.

Work shall begin only after the start work letter is received. The Contractor shall establish a mutually acceptable date with the City Engineer (contact the Construction Engineer at 266-4089) three (3) weeks in advance of the selected start date.

### **BID ITEM 20101 – EXCAVATION CUT**

Removal of any existing small timber retaining walls or planters, landscaping borders and small shrubs shall be considered incidental to this bid item.

### **BID ITEM 20335 – ABANDON SEWER PIPE WITH SLURRY**

Abandoning pipe with slurry shall require the entire pipe be filled with slurry. Any sanitary mains, that are intended to be abandoned that are damaged during the lateral installations/relocations shall be repaired by the Contractor at their expense and shall be considered incidental to this bid item.

### **BID ITEM 20336 – PIPE PLUG**

With regard to the City of Madison Standard Specifications for Public Works Construction Latest Edition Article 203.2(c), any pipe found in a trench that is less than 10" in diameter while installing a sewer facility shall be considered incidental to the pipe being installed.

Any pipe plugs required to abandon or remove sewer access structure (pipes directly connected to the structure) shall be considered incidental to abandoning or removing the structure regardless of the size of the pipe being abandoned.

### **SECTION 210.1(d)      STREET SWEEPING**

When required, either by the erosion control plan or the Construction Engineer, the Contractor shall perform mechanical street sweeping on all streets or paved surfaces affected by construction equipment, hauling or related construction activities that result in mud tracking or siltation. Mechanical street sweeping shall be completed as directed by the Construction Engineer and shall remove all loose material to the satisfaction of the Construction Engineer. Depending on site conditions, construction activities, and hauling methods utilized by the Contractor mechanical street sweeping may be required multiple times throughout the day with an absolute minimum that all streets are clean at the end of the work day. Areas not accessible by mechanical street sweepers may require hand scraping with shovels.

### **SECTION 210.6      EROSION CONTROL IMPLEMENTATION AND ENFORCEMENT**

Timely action regarding the maintenance of erosion control practices is critical to compliance with the City of Madison's land disturbance permits as issued both by the WDNR and the City. To allow the City to be assured of compliance with these permits, and federal, state and local laws, the Contractor shall be required to proceed in the following manner with regard to the maintenance of these practices.

In the event an erosion control practice is determined by the Engineer or their designee to require maintenance, or if the terms of the erosion control permit are not being met, the Engineer shall order the Contractor, in writing, to maintain the erosion control practice/device or comply with the terms of the permit. The contractor shall have forty eight (48) hours to complete that work and provide documentation that it has been completed to the Engineer.

Failure to complete the work within the forty eight (48) hours shall result in any or all of the following actions by the Engineer:

- 1) The Contractor shall be charged one (1) day of liquidated damages for failure to complete the work during the ordered timeframe and an additional day of liquidated damages for each twenty four (24) hour period that passes after the initial forty eight (48) hours during which time the ordered work is not completed.
- 2) At the Engineer's discretion, the work ordered may be completed by City Forces. In this case, the Contractor shall be charged the liquidated damages as described in 1 above and shall be charged the full cost of City Forces responding to complete the ordered work.

3) At the Engineer's discretion, work on the project as a whole may be suspended under Section 109.6 until such time as the Contractor completes the originally ordered work. In this case, the Contractor shall still be charged liquidated damages as described in 1 above. Additionally, days of work will continue to be charged during the suspension of work. If this results in the Contractor failing to complete the project within the allotted contract time then additional liquidated damages shall be charged.

Notwithstanding the foregoing, the failure to comply with an order under this Section may constitute a default under Section 109.10.

The Engineer's decision under this Section may be reviewed under Section 105.2.

### **BID ITEM 30208 – HAND FORMED CURB & GUTTER**

When placing Hand Formed Curb & Gutter adjacent to existing trees, the Contractor shall minimize the excavation necessary for the curb to be installed. The excavated area shall be limited to a maximum of 6 Inches behind the back of curb. Payment for hand formed concrete curb and gutter is full compensation for furnishing any materials necessary, and for furnishing all labor, tools, equipment, materials, and incidentals necessary to complete the work. The Contractor shall coordinate work with City Forestry as required by the standard specifications.

### **ARTICLE 500                    SEWER AND SEWER STRUCTURES GENERAL**

The sewer designer for the project is Matt Allie. He may be contacted at (608) 266-4058 or [mallie@cityofmadison.com](mailto:mallie@cityofmadison.com).

### **SANITARY SEWER GENERAL**

This project shall include installing approximately 466 feet of new 8" PVC SDR-35/26 sewer main and 700 feet of new sanitary lateral SDR-35/26.

ASTM D3034 SDR-35/SDR-26 sewer main and lateral as called for on the plan set shall be payable under Sanitary Sewer Main (Bid Item 50301) and Sanitary Lateral (Bid Item 50353).

All new sanitary sewer access structures shall include Neenah R-1550 castings with the new City of Madison casting detail (see S.D.D. 5.7.16) of the City of Madison Standard Specifications for Public Works Construction 2019 ed. All new sewer main connections may be factory cored and shall be included in the structure. All existing main connections shall be field cored to accommodate existing conditions and shall be compensated under BID ITEM 50791 SANITARY SEWER TAP. All sewer main and/or laterals not slated for replacement that are damaged during the installation of a structure shall be replaced by the Contractor and shall be considered incidental to the project. All benches and flowlines shall have a smooth trowel finish.

Contractors shall have a locator device on-site if they intend to start laying lateral pipe at the property line to minimize the amount of extra sidewalk removal. Each sanitary lateral shall have a maximum of 4 sidewalk squares removed and replaced. No additional compensation shall be awarded beyond this amount for the replacement of a sewer lateral. If laterals called for reinstatement on the plans are to be plugged under the direction of the engineer on-site, Contractors are required to use a sonde device to confirm that the laterals are not active.

All sanitary sewer laterals on this project were located by television inspection of the main and from City records.

Connection of new pipes to existing structures shall be accommodated with a Sanitary Sewer Tap – Bid Item 50791.

It is advised that the Contractor visit the site prior to bidding to determine the type of trench protection that will be necessary for the sanitary sewer main installation.

### **STORM SEWER GENERAL**

Storm sewer pipe work shall include installing approximately 517 feet of new 12" storm sewer.

Reconnection of new pipes at new or existing structures, shall be considered to be part of the work required to construct the new structure or to construct the new sewer pipe and shall not be rewarded with additional compensation. However, if the structure being removed is larger than the new structure, thus requiring additional pipe, the new pipe shall be paid under the appropriate bid item and the connection of the old pipe to the new pipe shall be accomplished with a concrete collar.

Connection of new pipes to existing structures shall be accommodated with a Storm Sewer Tap – Bid Item 50792.

Precast structures are only allowed where field poured structures are not specifically called for, and no precast structures are allowed until ULO's are completed and approval of the design engineer has been received.

### **BID ITEM 50353 - SANITARY SEWER LATERAL (SDR 35, SDR 26)**

Sanitary sewer laterals shown on the construction plans were located by City television inspection and records only.

Where the existing sanitary sewer laterals are being extended to connect to the new sanitary sewer main (being installed in a different location as the existing main), pipe plugs shall be required to plug the existing sanitary sewer main on both sides of the old lateral location. The pipe plugs shall be considered incidental to the bid price for SANITARY SEWER LATERAL. All work associated with this bid item shall comply with Article 503 of the Standard Specifications.

Per the City of Madison Standard Specifications for sanitary sewer lateral construction on street reconstruction projects, Contractors are encouraged to begin installation of sanitary lateral pipe at the proposed sewer main. If Contractor starts excavation for the lateral at the property line, it shall be at the Contractor's risk. No Utility Line Openings (ULO's) will be granted for the inability to locate the sanitary lateral at the property line. Any extra sidewalk removal will not be compensated to the Contractor looking for an existing sanitary lateral at the property line. Contractors are encouraged to have a locator device on-site if they intend to start laying lateral pipe at the property line to minimize the amount of extra sidewalk removal.

Proposed sanitary lateral locations near trees are subject to change based upon data obtained in the field and property owner involvement. Excavation near trees shall comply with Article 107.13 of the Standard Specifications. If 5 ft of separation from the tree to the excavation cannot be maintained, lateral replacement shall stop at the curb.

Each sanitary sewer lateral shall have a maximum of 4 sidewalk squares (106 sf) removed and replaced. No additional compensation shall be awarded beyond this amount for the replacement of a sewer lateral.

### **BID ITEM 50356 – RECONNECT SANITARY LATERAL**

The first 5 feet of pipe shall be included with this bid item regardless of pipe type or fittings used. Beyond 5' shall be paid for separately (Bid Item 50353 SANITARY SEWER LATERAL). Connections to the existing 36" diameter MMSD sewer main shall be done with 6" diameter Inserta Tee (or equivalent) pipe connections. The Contractor shall adhere to the installation procedures called out by the manufacturer. The existing 36" RCP pipe shall be field cored to the appropriate size with a diamond drill bit per the manufacturer's specifications, The Inserta Tee (or equivalent) shall then be compression fit into the hole to achieve a water tight connections. The lateral connections shall be made at an angle corresponding to

2 o'clock or 10 o'clock on the pipe circumference, depending on which side of the street the lateral serves. Risers should not enter the top of the 36" diameter main. All work under this bid item shall be done in accordance with Article 503 of the City of Madison Standard Specifications for Public Works Construction, latest addition. Lateral risers shall be installed in conformance with the S.D.D. 5.3.1 and made payable as Reconnect (Bid Item 50356) and Sanitary Sewer Lateral (Bid Item 50353)

The first 5 feet of sewer lateral pipe/ fittings measured from the sewer main shall be considered the reconnect for all sewer lateral reconnections. Lateral connections to sewer access structures shall be paid for separately as a sanitary tap. 5' of lateral pipe is not considered incidental to the sanitary tap connection.

### **BID ITEM 50390 – SEWER ELECTRONIC MARKERS**

With regard to the City of Madison Standard Specifications for Public Works Construction, Latest Edition Section 503.3(c), each sanitary lateral shall have a minimum of two (2) electronic markers with the City providing the Contractor with the required number of electronic markers. For sanitary laterals, which only include the installation of a wye, a marker ball shall be installed directly above the wye connection to the main.

### **BID ITEM 50783 – INSIDE DROP**

#### **DESCRIPTION**

Work under this item shall include construction of an inside drop as called for on the plans in accordance with Article 507.3(d), SDD 5.7.30 of the City of Madison Standard Specifications for Public Works Construction, Latest Edition except that the measurement quantity will not be the vertical distance difference between the connecting pipe and spring line of the outgoing pipe. Pay quantity will rather be the vertical foot difference between the invert of the connecting pipe to crown of the outgoing pipe.

With these all being MMSD manholes, the Contractor shall notify Ray Schneider at (608) 347-3628 or rays@madsewer.org 5 days prior to connecting to MMSD manhole for permitting and inspection. Permit fees associated with connection to MMSD facilities will be the responsibility of the contractor.

#### **METHOD OF MEASUREMENT**

Inside Drop shall be measured by the vertical foot difference measured from the invert of the connecting pipe to crown of the outgoing pipe.

#### **BASIS OF PAYMENT**

Inside Drop, measured as described, which will be paid for at the contract unit price, which shall be full compensation for all materials, labor, equipment, and incidentals necessary to acceptably complete the work as set forth in the description.

### **BID ITEM 50801 – UTILITY LINE OPENING (ULO)**

The work under this item shall be completed in accordance with Article 508 of the Standard Specifications for Public Works Construction. It is the discretion of the Contractor to locate utilities by either a trench excavation or by a pothole technique. However, the Contractor shall not be compensated more than once for multiple utilities located within a maximum distance of five (5) feet long.

### **BID ITEM 90001 - HIGH FRICTION COLORED SURFACE-BIKE LANE GREEN**

#### **DESCRIPTION**





pavement markings that conflict with the surface application and thoroughly sweep or vacuum the surface clean prior to the epoxy binder application.

Pre-treat joints and cracks greater than 1/4 inches in width and depth with the mixed epoxy specified herein or by using an alternative procedure proposed by the manufacturer and agreed upon by the Engineer. Proceed with the epoxy binder and aggregate topping installation once the epoxy, in the pre-treated areas, has gelled or once the alternative procedure has been accomplished.

For applications on new pavements, install the high friction epoxy binder and aggregate topping a minimum of 20 days after the placement of the underlying and adjacent pavement.

**Mixing and Application of MMA based resin system and Aggregate Wearing Course:** Utilize one of the following methods for the application of the MMA based resin system, as applicable.

1) **Hand mixing and application:** Proportion the MMA based resin system as recommended by the manufacturer, and mix using a low speed, high torque drill fitted with a helical stirrer. Hand-apply the mixed components onto a prepared pavement surface at a thickness recommended by the manufacturer. Uniformly spread hand-applied base binder onto the substrate surface by means of a serrated edge squeegee.

2) **Mechanical mixing and application:** Apply the MMA based resin system material by a truck mounted application machine onto the pavement section to be treated in varying widths at a uniform application thickness. Proceed with operations in such a manner that will not allow the MMA based resin system material to separate in the mixing lines, cure, dry, or otherwise impair retention bonding of the high friction surfacing aggregate. Apply the mixed components mechanically onto the prepared pavement surface with a uniform thickness of 50 to 100 mils. Immediately, mechanically apply the high friction surfacing aggregate in a uniform, continuous manner.

For either of the above methods, do not use vibratory or impact type compaction on the aggregate after placement. Use only lightweight rollers to seat the aggregate topping without crushing the aggregate. Complete coverage of the "wet" MMA based resin system material with aggregate is necessary to achieve a uniform surface. No exposed wet spots shall be visible once the aggregate is placed.

**Curing:** Allow the high friction aggregate topped MMA based resin system to cure in accordance with manufacturer recommendations. Protect treated surfaces from traffic and environmental effects until the area has cured.

**Removal of Excess Aggregate:** Remove the excess aggregate by hand brooms, mechanical sweeping, or vacuum sweeping before opening to traffic. Excess aggregate can be reused on the following day's installation, provided the aggregate is clean, uncontaminated, and dry.

The Engineer may require additional mechanical or vacuum sweeping as necessary after the system fully cures and the treated surface is open to traffic.

## PERFORMANCE REQUIREMENTS

**Raveling and Delamination:** Remove and replace high friction colored surface treatment that ravel, delaminates, or wears off within 90 days after placement, unless approved to remain in place by the Engineer. The limits of removal and replacement shall be approved by the Engineer. The replaced high friction colored surface treatment shall meet the requirements of this sub-article.

**Warranty:** The MMA based resin system material shall be installed per plans and specification. The Engineer will notify the Contractor within 48 hours of installation regarding any of the MMA based resin system material that is installed not to specification or to the satisfaction of the Engineer. Non-conforming MMA based resin system material shall be removed at no charge to the City and replaced with conforming product.

The warranty period in reference to the following points is to be 3 years from date of installation. Warranty of the following items shall be submitted in writing by the Contractor or his installer prior to the pre-construction meeting.

- The MMA based resin system material will maintain its original color in the surface area throughout the 'warranty period' with the exception of natural weathering, tire and dirt deposits and abnormal markings applied after installation.
- Friction will achieve a minimum BPN of 60 in accordance with ASTM E-303
- The MMA based resin system material will maintain its skid resistance qualities in 100% of its surface area to never fall below a BPN of 60 during the 'warranty period'.
- With the exception of structural cracking or excessive movement of the surface beneath the two-part modified epoxy material will not be subject to excessive cracking in its surface.

#### **METHOD OF MEASUREMENT**

High Friction Colored surface will be measured in square foot, completed and accepted. No deduction will be made for the areas occupied by manholes, inlets, drainage structures, pavement markings or by any public utility appurtenances within the area.

#### **BASIS OF PAYMENT**

Payment for this work, measured as provided above, will be made under: High Friction Colored Surface at the contract unit price per square foot, which shall be full compensation for all work, materials, labor, and incidentals required to complete the work as specified, including any re-application or repair required under the Performance Requirements and Warranty as provided herein.

#### **BID ITEM 90070 – MODIFY MMSD SAS – PARTIAL ABANDON, POUR BENCH WITH FLOWLINES**

##### **DESCRIPTION**

This item includes all necessary work, materials, preparation, and incidentals necessary to partially abandon the MMSD SAS, construct a poured concrete bench with flowlines at the elevation called out for MMSD MH02-112 on the sanitary sewer schedule. Contractor shall abandon the structure with coring holes in the base of the structure and filling the structure with compacted fill up to 8 inches below the proposed pipe invert. Abandonment shall be completed in conformance with Article 203.1(c) of the City of Madison Standard Specifications for Public Works Construction, latest edition. Contractor shall pour a new floor, bench, and flow lines in conformance with Article 501 of the City of Madison Standard Specifications for Public Works Construction, latest edition.

##### **METHOD OF MEASUREMENT**

MODIFY MMSD SAS – PARTIAL ABANDON, POUR BENCH WITH FLOWLINES shall be measured as each completed unit. The contract price shall include furnishing all materials necessary to perform the work, filling the SAS to raise the invert elevation, pouring a new bench with flowlines, and all other work incidental to the installation of sanitary sewer access structures.

##### **BASIS OF PAYMENT**

MODIFY MMSD SAS – PARTIAL ABANDON, POUR BENCH WITH FLOWLINES shall be measured as described above which shall be full payment for all work, materials, and incidentals required to complete the work in accordance with the description.

#### **BID ITEM 90071 – ABANDON SEWER ACCESS STRUCTURE (MMSD)**

Work under this item shall abandon the MMSD owned structures called for abandonment in accordance with Article 203 of the Standard Specifications for Public Works Construction, with the following exceptions. This specification does not pertain to the partial abandon of MMSD MH02-112. MMSD structures shall not have cored holes in the base of any the structures. All MMSD structures shall be

abandoned by filling the entire structure that is to remain with either pea gravel or lightweight cellular concrete such as Elastizell, or an approved equivalent.

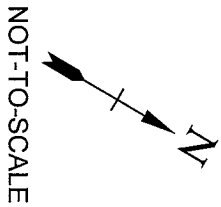
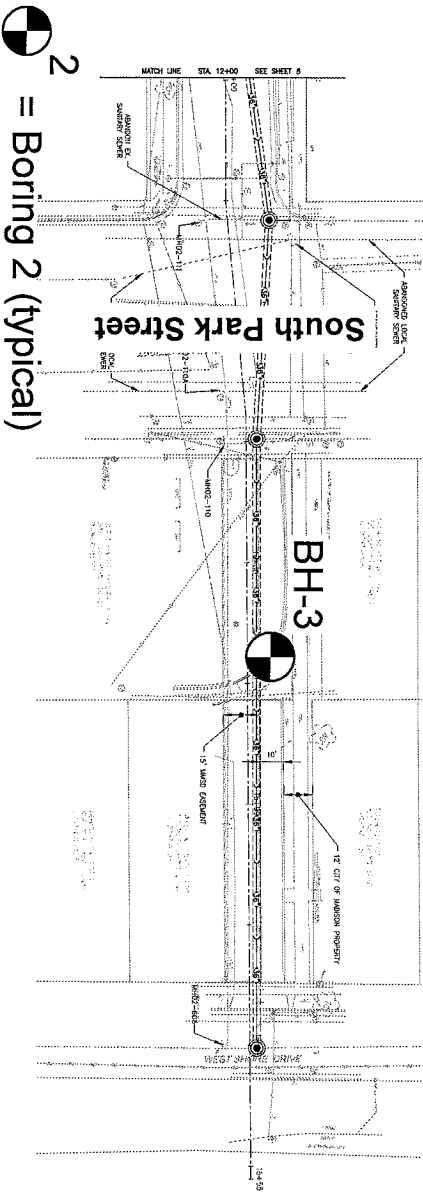
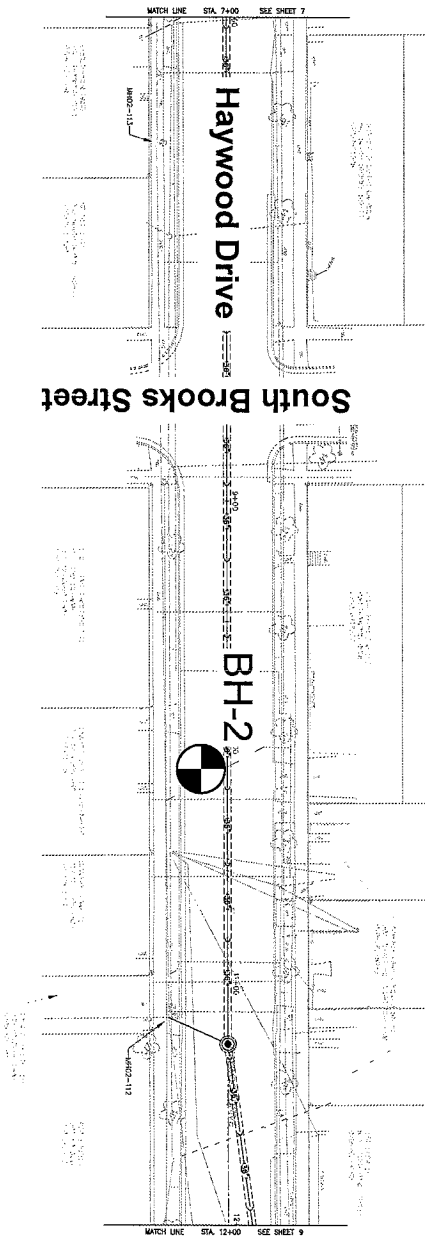
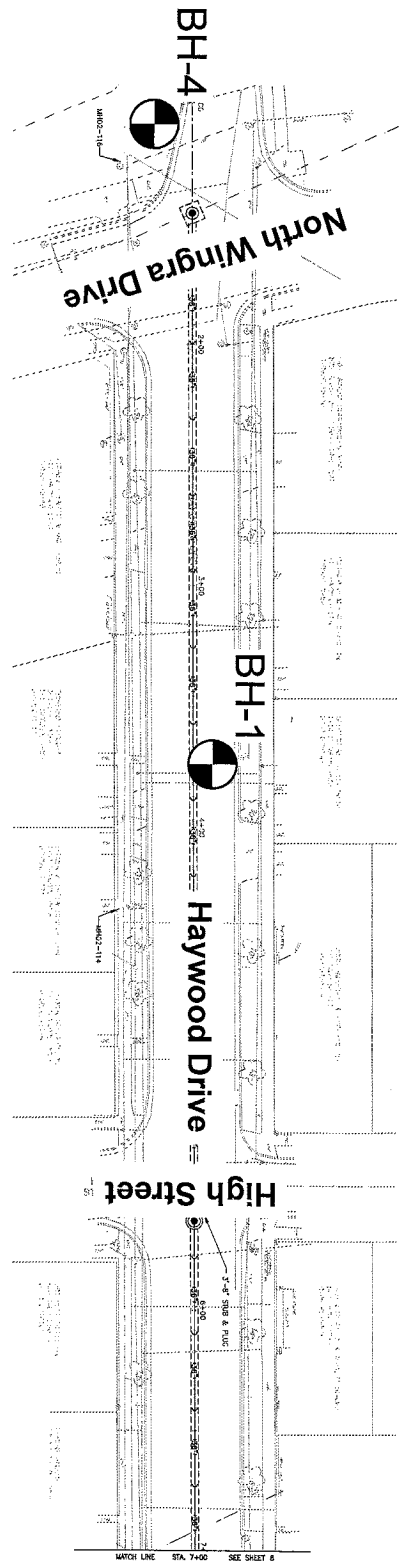
The three (3) MMSD structures in Park Street shall also be abandoned this way but will not have the structure roofs and adjustment rings removed to the 2' depth as required in the standard specifications or the casting removed (MH02-110, MH02-110A, and MH02-111). These manhole castings shall remain as they are with no concrete pavement, sidewalk or curb removal. For these 3 structures, the contractor shall fill the entire structure to the rim with the pea gravel or lightweight cellular concrete such as Elastizell, or an approved equivalent.

#### **METHOD OF MEASUREMENT**

ABANDON SEWER ACCESS STRUCTURE (MMSD) shall be measured as each completed unit acceptably completed.

#### **BASIS OF PAYMENT**

ABANDON SEWER ACCESS STRUCTURE (MMSD) shall be measured as described above which shall be full payment for all work, materials, and incidentals required to complete the work in accordance with the description.



**Soils & Engineering Services, Inc.**  
 1102 STEWART STREET • MADISON, WISCONSIN 53713  
 Phone: 608-274-7600 • 888-866-SOIL (7645)  
 Fax: 608-274-7511 • Email: soils@soils.ws  
 CONSULTING CIVIL ENGINEERS SINCE 1966

**LOCATION SKETCH**  
 Haywood Drive  
 North Wingra Drive to West Shore Drive  
 City of Madison, Dane County, Wisconsin

**DRAWING**  
 13300.01-1

**NOTES**

1. The boundary lines between different soil strata, as shown on the Soil Boring Records, are approximate and may be gradual.
2. The drillers' field log contains a description of the soil conditions between samples based on the equipment performance and the soil cuttings. The Soil Boring Records contain the description of the soil conditions as interpreted by a geotechnical engineer and/or a geologist after review of the drillers' field logs and soil samples and/or laboratory test results.
3. We define "Caved Level" as the depth below the existing ground surface at a boring location where the soils have collapsed into the borehole following removal of the drilling tools.
4. We define "Water Level" as the depth below the existing ground surface at a boring location to the level of water in the open borehole at the time indicated unless otherwise defined on the Soil Boring Records.
5. We define "at completion" for a boring as being the time when our drilling crew has completed the removal of all drilling tools from the borehole.
6. The Notes and Legend Record and the Soil Boring Records are a part of the geotechnical report. The geotechnical report should be included in the bidding or reference documents.

**RELATIVE PERCENTAGE TERMS**

no	0%
trace	<5%
few	5 to <10%
little	10 to <30%
some	30 to < 50%

**TEST RESULTS LEGEND**

$q_p$  = Penetrometer reading,  $\frac{\text{ton}}{\text{ft}^2}$

**RELATIVE MOISTURE TERMS AT TIME OF SAMPLING**

Frozen or F = Frozen material  
 Dry = Dusty, dry to touch, absence of moisture  
 Moist or M = Damp to touch, no visible water  
 Wet or W = Visible free water


**DRILLING METHODS LEGEND**


HSA = Continuous flight hollow-stem augers

**REMARKS LEGEND**

OO = Organic Odor

**SAMPLER TYPE LEGEND**

 Grab sample

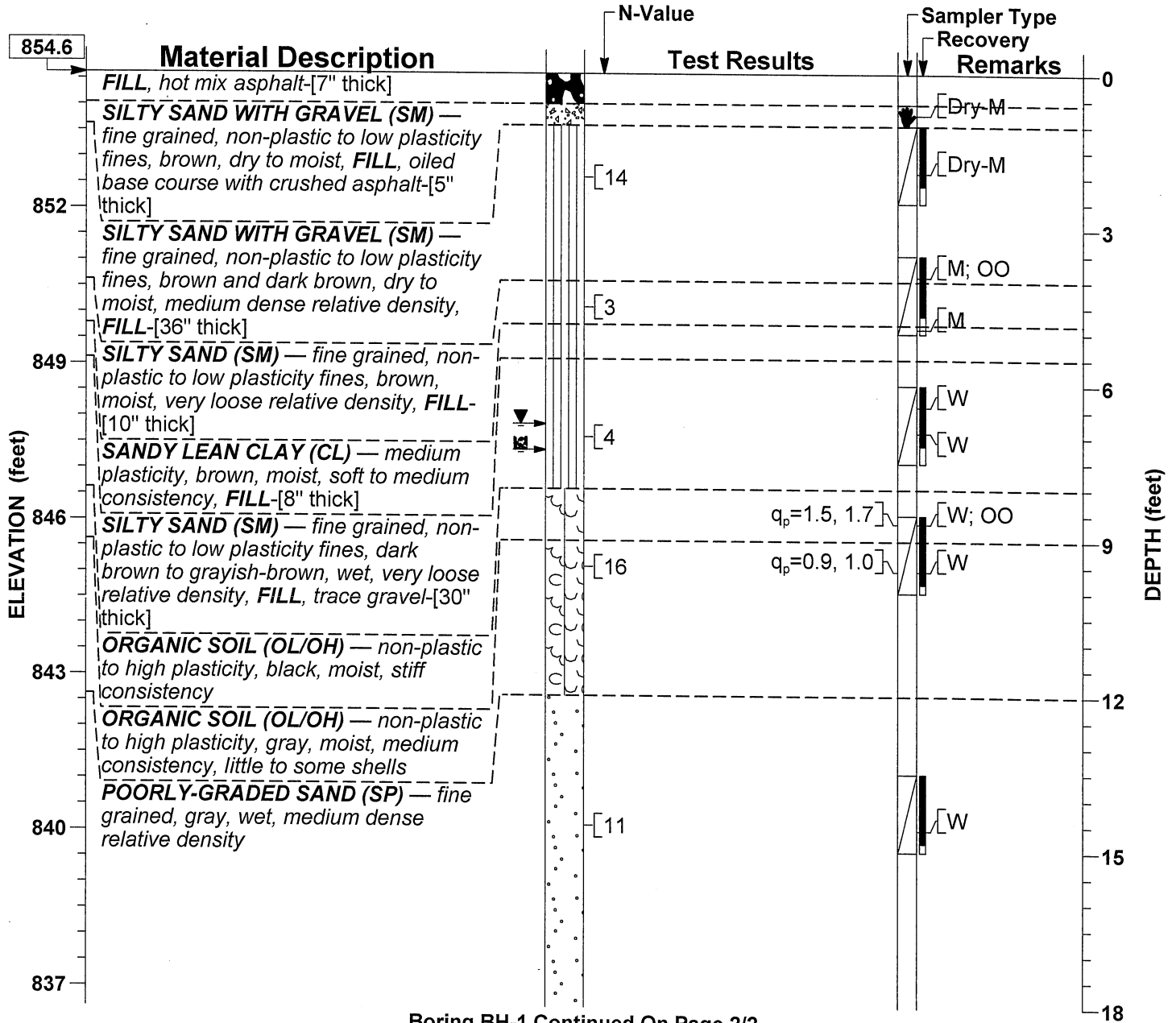
 2-inch-outside-diameter, split-barrel sampler

**Soils & Engineering Services, Inc.**  
 1102 STEWART STREET • MADISON, WISCONSIN 53713  
 Phone: 608-274-7600 • 888-866-SOIL (7645)  
 Fax: 608-274-7511 • Email: soils@soils.ws  
 CONSULTING CIVIL ENGINEERS SINCE 1966

**NOTES AND LEGEND RECORD**  
 Haywood Drive  
 North Wingra Drive to West Shore Drive  
 City of Madison, Dane County, Wisconsin

13300.01

General Location: <b>8 feet north of Haywood Drive <math>\pm</math> ; 3 feet east of House # 1114</b>				<b>Boring BH-1</b>			
LATITUDE: —	LONGITUDE: —	COUNTY: <b>Dane</b>	SECTION: <b>26</b>	CREW CHIEF: <b>SJH</b>	DRILL RIG: <b>CME 75</b>	PAGE: <b>1 of 2</b>	
NORTHING: —	EASTING: —	TOWNSHIP: <b>(Madison) 7 N</b>	$\frac{1}{4}$ : <b>NW</b>	LOG REVIEW: <b>CMB</b>	HAMMER TYPE: <b>Automatic</b>	TOTAL DEPTH: <b>20'-0"</b>	
STATION: —	OFFSET: —	RANGE: <b>9 E</b>	$\frac{1}{4}$ $\frac{1}{4}$ : <b>NW</b>	LOG QC: <b>CMB</b>	DATE STARTED: <b>07/09/2018</b>	DATE COMPLETED: <b>07/09/2018</b>	



Boring BH-1 Continued On Page 2/2

WATER LEVEL LEGEND	OTHER LEVEL LEGEND
▼ 6'-9" at completion	⊠ 7'-3" Caved at completion

DRILL METHOD	TOOL SIZE	CASING SIZE	DRILL FLUID	DEPTH FROM	DEPTH TO	HOLE DIA
HSA	2 1/4"	—	None	0'-0"	20'-0"	5.6"

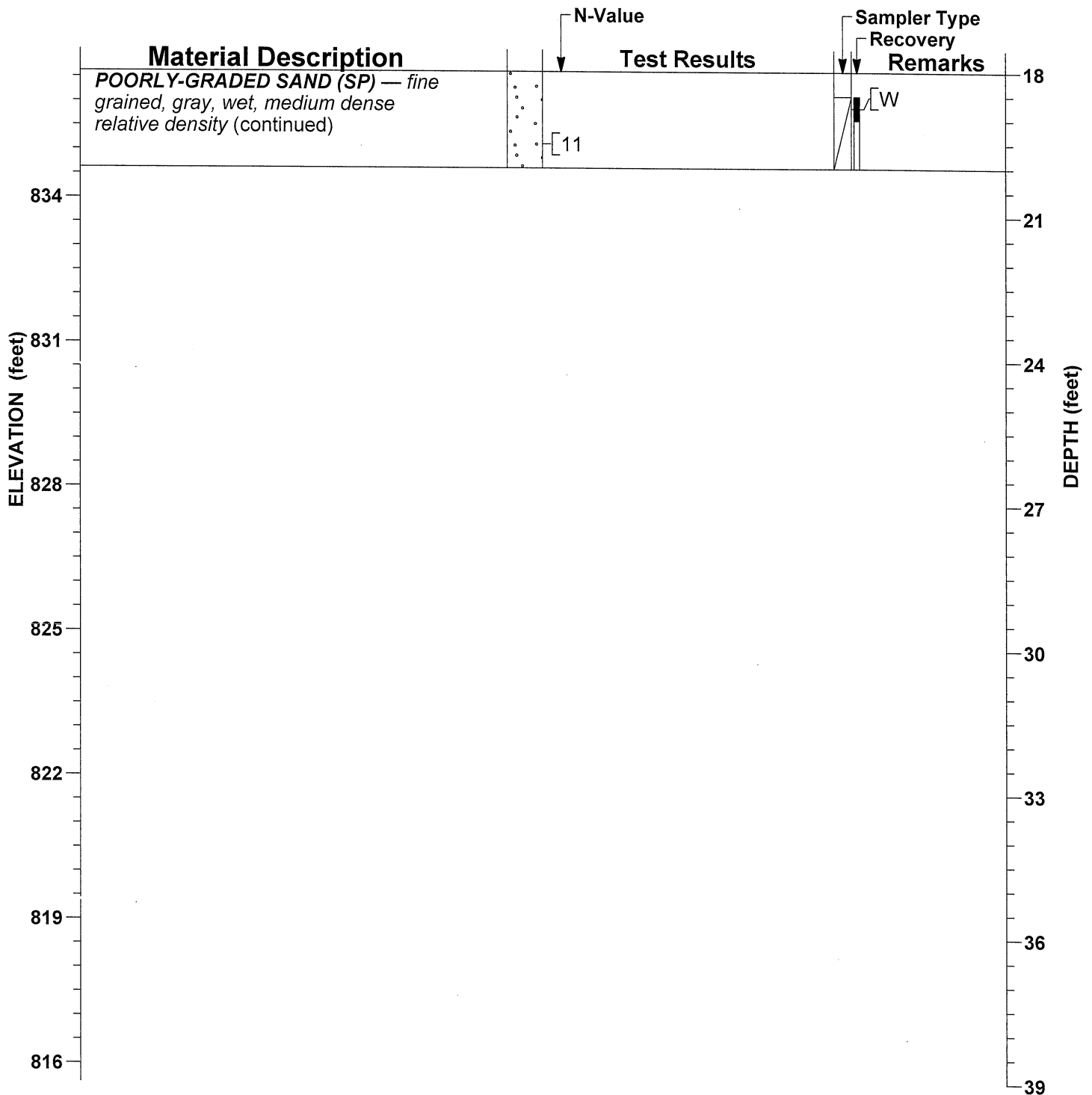
SAMPLING METHOD(S): ASTM D1586
SURFACE PATCH: Cold Mix Asphalt Patching Compound
BACKFILL: Base Course, Bentonite Chips, Caved Soil

The Notes and Legend Record is considered a part of this Soil Boring Record.

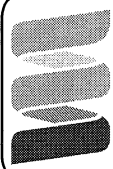
**Soils & Engineering Services, Inc.**  
 1102 STEWART STREET • MADISON, WISCONSIN 53713  
 Phone: 608-274-7600 • 888-866-SOIL (7645)  
 Fax: 608-274-7511 • Email: soils@soils.ws  
 CONSULTING CIVIL ENGINEERS SINCE 1966

**SOIL BORING RECORD**  
 Haywood Drive  
 North Wingra Drive to West Shore Drive  
 City of Madison, Dane County, Wisconsin

13300.01



The Notes and Legend Record is considered a part of this Soil Boring Record.



**Soils & Engineering Services, Inc.**

1102 STEWART STREET • MADISON, WISCONSIN 53713  
 Phone: 608-274-7600 • 888-866-SOIL (7645)  
 Fax: 608-274-7511 • Email: soils@soils.ws

CONSULTING CIVIL ENGINEERS SINCE 1966

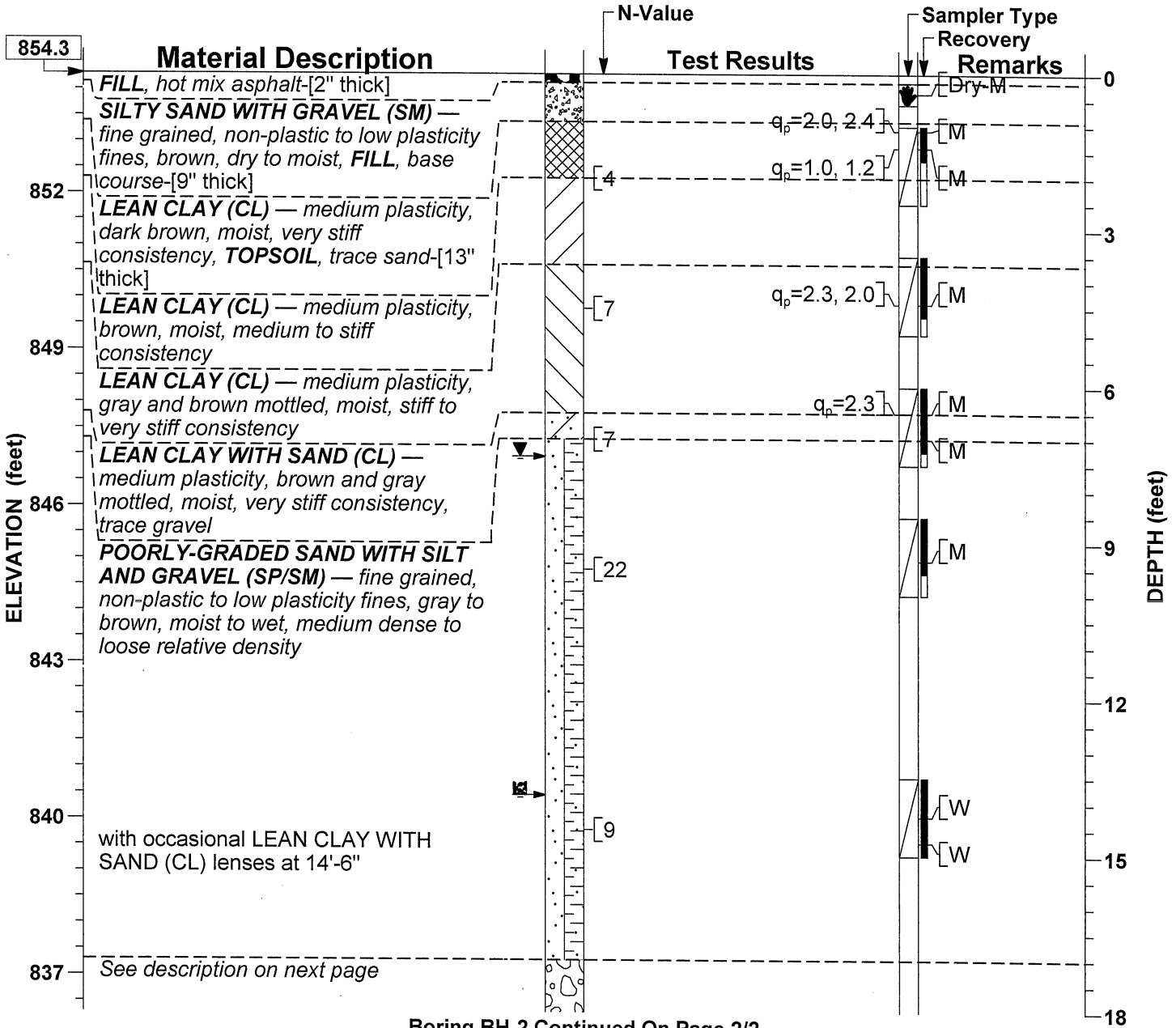
**SOIL BORING RECORD**

Haywood Drive  
 North Wingra Drive to West Shore Drive  
 City of Madison, Dane County, Wisconsin

13300.01



General Location: <b>11 feet south of Haywood Drive &amp; ; 16 feet east of House #921 driveway</b>			<b>Boring BH-2</b>			
LATITUDE: —	LONGITUDE: —	COUNTY: <b>Dane</b>	SECTION: <b>26</b>	CREW CHIEF: <b>SJH</b>	DRILL RIG: <b>CME 75</b>	PAGE: <b>1 of 2</b>
NORTHING: —	EASTING: —	TOWNSHIP: <b>(Madison) 7 N</b>	¼: <b>NW</b>	LOG REVIEW: <b>CMB</b>	HAMMER TYPE: <b>Automatic</b>	TOTAL DEPTH: <b>30'-0"</b>
STATION: —	OFFSET: —	RANGE: <b>9 E</b>	¼ ¼: <b>NW</b>	LOG QC: <b>CMB</b>	DATE STARTED: <b>07/10/2018</b>	DATE COMPLETED: <b>07/10/2018</b>



Boring BH-2 Continued On Page 2/2

WATER LEVEL LEGEND	OTHER LEVEL LEGEND
▼ 7'-4" at completion	⊠ 13'-10" Caved at completion

DRILL METHOD	TOOL SIZE	CASING SIZE	DRILL FLUID	DEPTH FROM	DEPTH TO	HOLE DIA
HSA	2 1/4"	—	None	0'-0"	30'-0"	5.6"

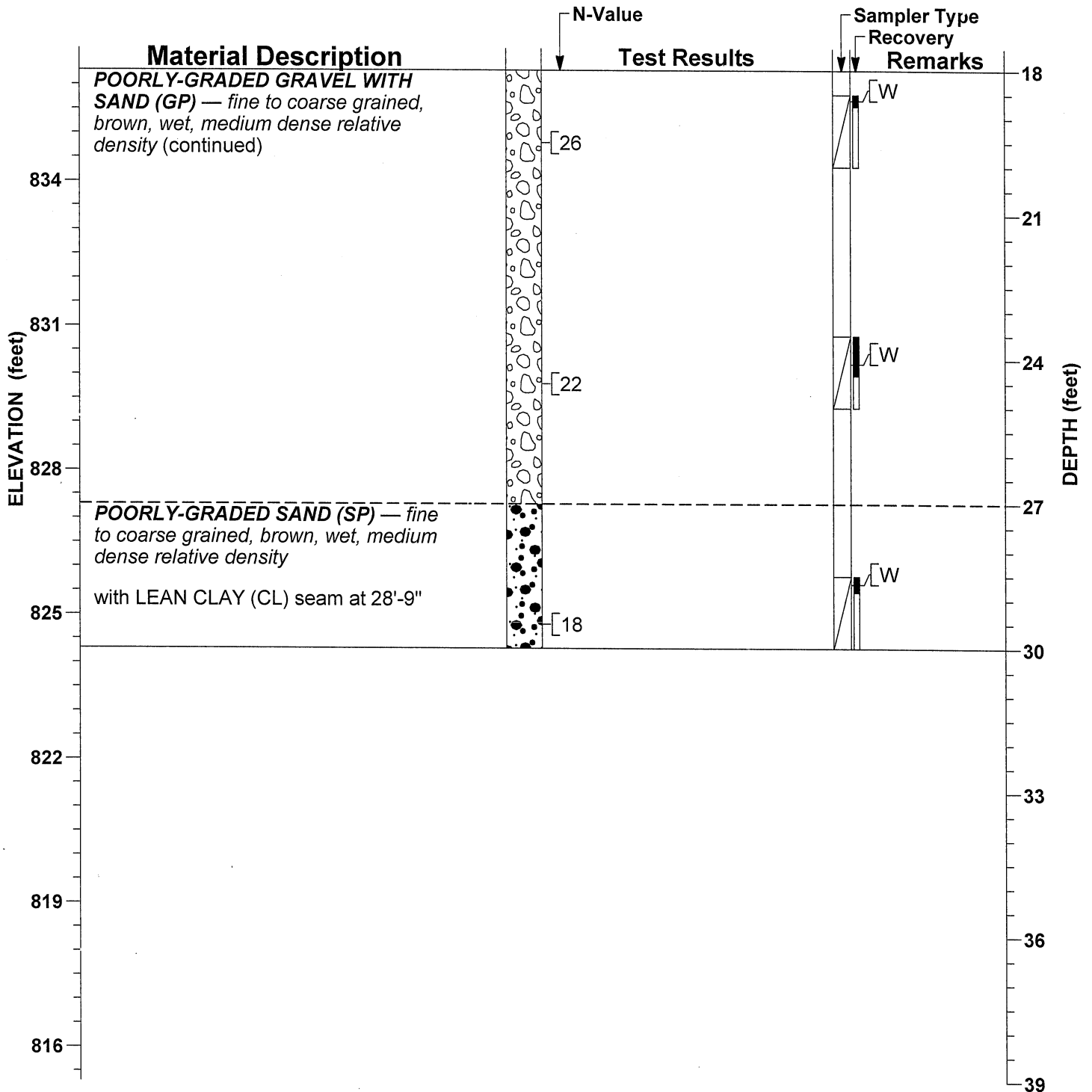
SAMPLING METHOD(S): ASTM D1586
SURFACE PATCH: Cold Mix Asphalt Patching Compound
BACKFILL: Base Course, Bentonite Chips, Caved Soil

The Notes and Legend Record is considered a part of this Soil Boring Record.

**Soils & Engineering Services, Inc.**  
 1102 STEWART STREET • MADISON, WISCONSIN 53713  
 Phone: 608-274-7600 • 888-866-SOIL (7645)  
 Fax: 608-274-7511 • Email: soils@soils.ws  
 CONSULTING CIVIL ENGINEERS SINCE 1966

**SOIL BORING RECORD**  
 Haywood Drive  
 North Wingra Drive to West Shore Drive  
 City of Madison, Dane County, Wisconsin

13300.01



The Notes and Legend Record is considered a part of this Soil Boring Record.

**Soils & Engineering Services, Inc.**  
 1102 STEWART STREET • MADISON, WISCONSIN 53713  
 Phone: 608-274-7600 • 888-866-SOIL (7645)  
 Fax: 608-274-7511 • Email: soils@soils.ws  
 CONSULTING CIVIL ENGINEERS SINCE 1966

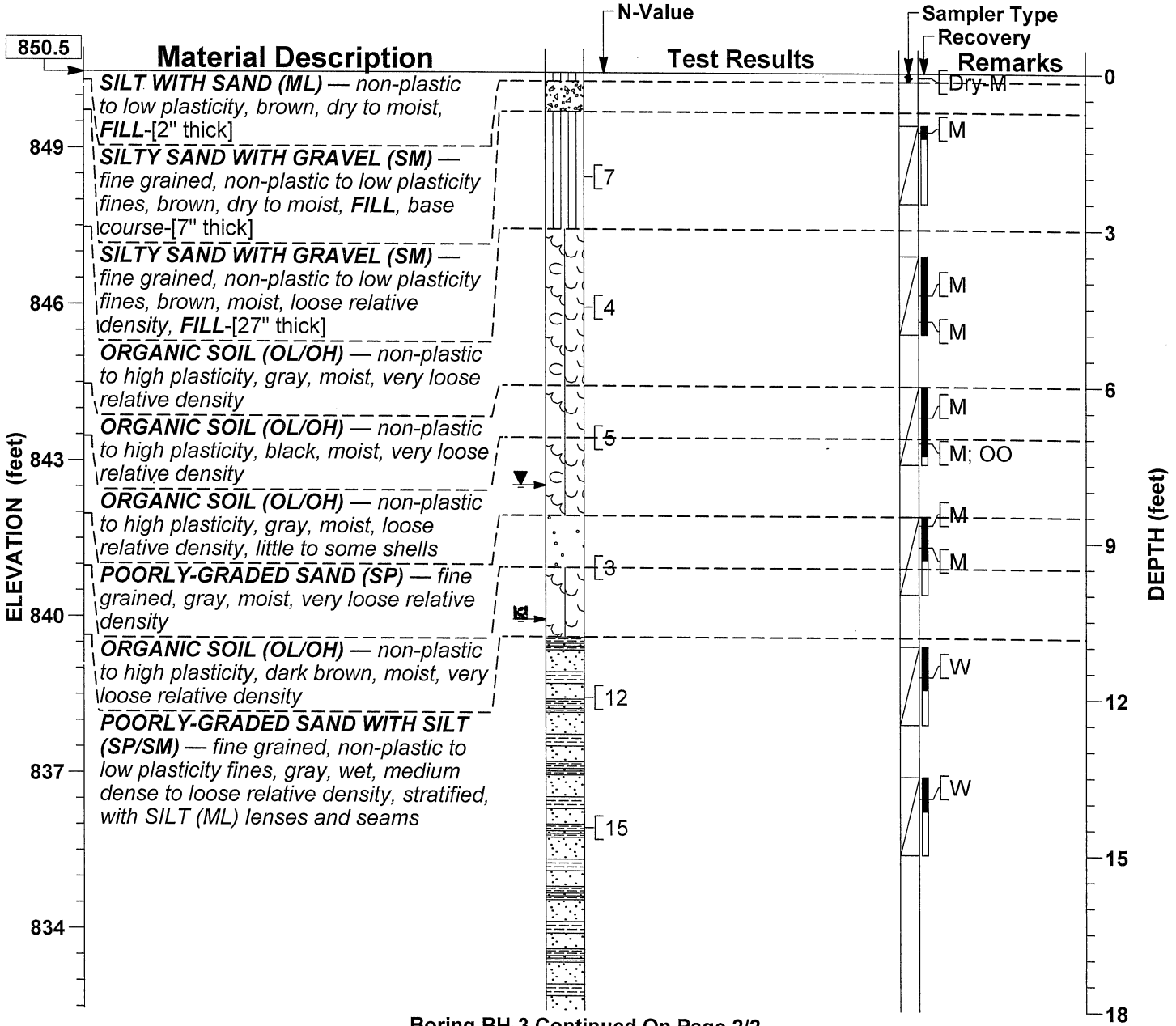
**SOIL BORING RECORD**  
 Haywood Drive  
 North Wingra Drive to West Shore Drive  
 City of Madison, Dane County, Wisconsin

13300.01

General Location: **9 feet south of sidewalk north of Mister Car Wash; 92 feet east of east Park Street curb**

**Boring BH-3**

LATITUDE: —	LONGITUDE: —	COUNTY: <b>Dane</b>	SECTION: <b>26</b>	CREW CHIEF: <b>SJH</b>	DRILL RIG: <b>CME 75</b>	PAGE: <b>1 of 2</b>
NORTHING: —	EASTING: —	TOWNSHIP: <b>(Madison) 7 N</b>	¼: <b>NW</b>	LOG REVIEW: <b>CMB</b>	HAMMER TYPE: <b>Automatic</b>	TOTAL DEPTH: <b>20'-0"</b>
STATION: —	OFFSET: —	RANGE: <b>9 E</b>	¼ ¼: <b>NW</b>	LOG QC: <b>CMB</b>	DATE STARTED: <b>07/11/2018</b>	DATE COMPLETED: <b>07/11/2018</b>



Boring BH-3 Continued On Page 2/2

WATER LEVEL LEGEND	OTHER LEVEL LEGEND
▼ 7'-11" at completion	⊠ 10'-6" Caved at completion

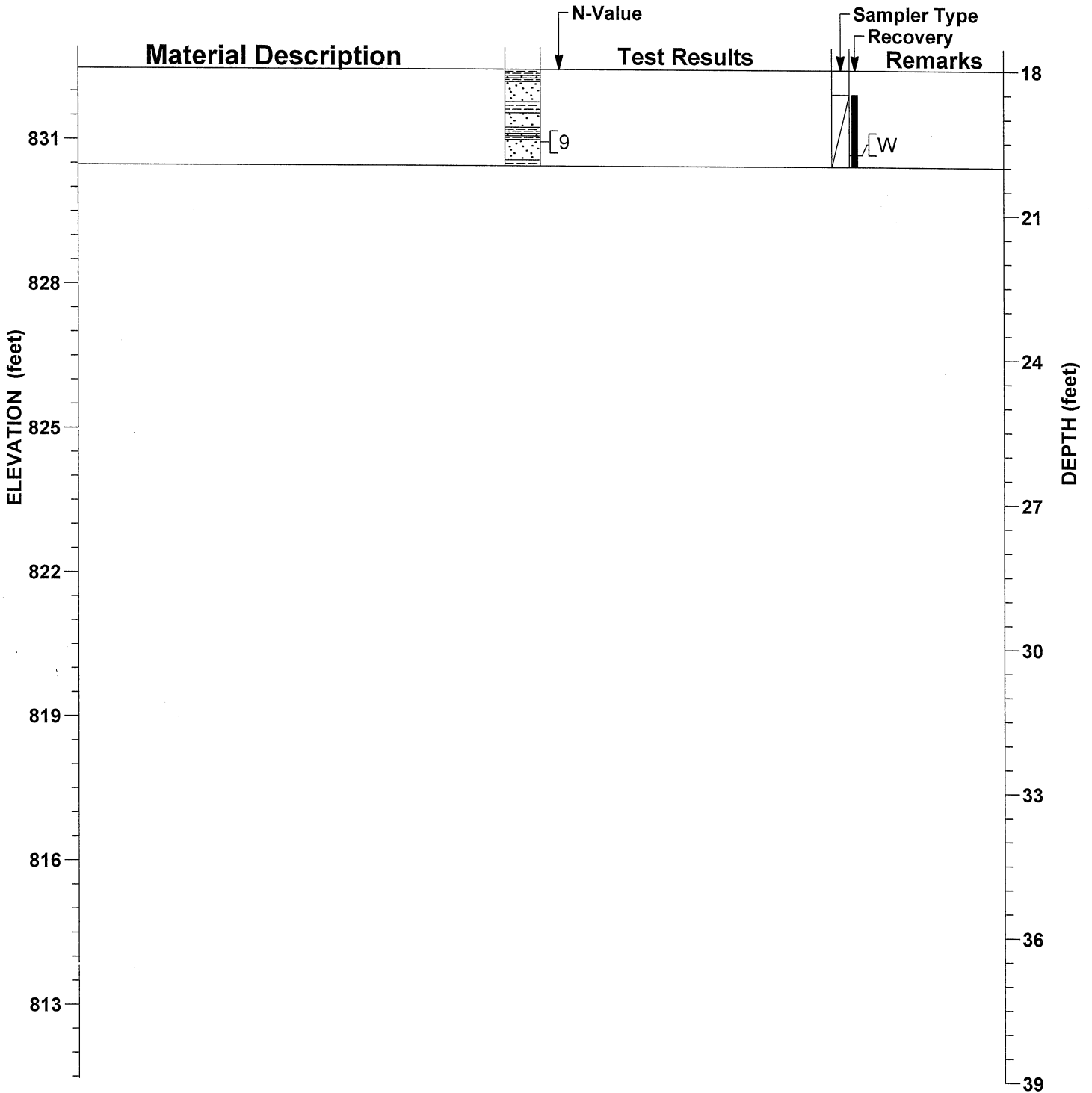
DRILL METHOD	TOOL SIZE	CASING SIZE	DRILL FLUID	DEPTH FROM	DEPTH TO	HOLE DIA
HSA	2 1/4"	—	None	0'-0"	20'-0"	5.6"
SAMPLING METHOD(S): ASTM D1586						
SURFACE PATCH: —						
BACKFILL: Topsoil, Bentonite Chips, Caved Soil						

The Notes and Legend Record is considered a part of this Soil Boring Record.

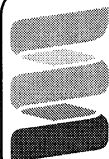
**Soils & Engineering Services, Inc.**  
 1102 STEWART STREET • MADISON, WISCONSIN 53713  
 Phone: 608-274-7600 • 888-866-SOIL (7645)  
 Fax: 608-274-7511 • Email: soils@soils.ws  
 CONSULTING CIVIL ENGINEERS SINCE 1966

**SOIL BORING RECORD**  
 Haywood Drive  
 North Wingra Drive to West Shore Drive  
 City of Madison, Dane County, Wisconsin

13300.01



The Notes and Legend Record is considered a part of this Soil Boring Record.



**Soils & Engineering Services, Inc.**

1102 STEWART STREET • MADISON, WISCONSIN 53713  
 Phone: 608-274-7600 • 888-866-SOIL (7645)  
 Fax: 608-274-7511 • Email: soils@soils.ws

CONSULTING CIVIL ENGINEERS SINCE 1966

**SOIL BORING RECORD**

Haywood Drive  
 North Wingra Drive to West Shore Drive  
 City of Madison, Dane County, Wisconsin

13300.01

**SECTION E: BIDDERS ACKNOWLEDGEMENT**

**HAYWOOD DRIVE RECONSTRUCTION ASSESSMENT DISTRICT - 2019  
CONTRACT NO. 8297**

Bidder must state a Unit Price and Total Bid for each item. The Total Bid for each item must be the product of quantity, by Unit Price. The Grand Total must be the sum of the Total Bids for the various items. In case of multiplication errors or addition errors, the Grand Total with corrected multiplication and/or addition shall determine the Grand Total bid for each contract. The Unit Price and Total Bid must be entered numerically in the spaces provided. All words and numbers shall be written in ink.

1. The undersigned having familiarized himself/herself with the Contract documents, including Advertisement for Bids, Instructions to Bidders, Form of Proposal, City of Madison Standard Specifications for Public Works Construction - 2019 Edition thereto, Form of Agreement, Form of Bond, and Addenda issued and attached to the plans and specifications on file in the office of the City Engineer, hereby proposes to provide and furnish all the labor, materials, tools, and expendable equipment necessary to perform and complete in a workmanlike manner the specified construction on this project for the City of Madison; all in accordance with the plans and specifications as prepared by the City Engineer, including Addenda Nos. \_\_\_\_\_ through \_\_\_\_\_ to the Contract, at the prices for said work as contained in this proposal. (Electronic bids submittals shall acknowledge addendum under Section E and shall not acknowledge here)
2. If awarded the Contract, we will initiate action within seven (7) days after notification or in accordance with the date specified in the contract to begin work and will proceed with diligence to bring the project to full completion within the number of work days allowed in the Contract or by the calendar date stated in the Contract.
3. The undersigned Bidder or Contractor certifies that he/she is not a party to any contract, combination in form of trust or otherwise, or conspiracy in restraint of trade or commerce or any other violation of the anti-trust laws of the State of Wisconsin or of the United States, with respect to this bid or contract or otherwise.
4. I hereby certify that I have met the Bid Bond Requirements as specified in Section 102.5. *(IF BID BOND IS USED, IT SHALL BE SUBMITTED ON THE FORMS PROVIDED BY THE CITY. FAILURE TO DO SO MAY RESULT IN REJECTION OF THE BID).*
5. I hereby certify that all statements herein are made on behalf of \_\_\_\_\_ (name of corporation, partnership, or person submitting bid) a corporation organized and existing under the laws of the State of \_\_\_\_\_ a partnership consisting of \_\_\_\_\_; an individual trading as \_\_\_\_\_; of the City of \_\_\_\_\_ State of \_\_\_\_\_; that I have examined and carefully prepared this Proposal, from the plans and specifications and have checked the same in detail before submitting this Proposal; that I have fully authority to make such statements and submit this Proposal in (its, their) behalf; and that the said statements are true and correct.

\_\_\_\_\_  
SIGNATURE

\_\_\_\_\_  
TITLE, IF ANY

Sworn and subscribed to before me this \_\_\_\_\_ day of \_\_\_\_\_, 20\_\_\_\_\_.

\_\_\_\_\_  
(Notary Public or other officer authorized to administer oaths)  
My Commission Expires \_\_\_\_\_  
Bidders shall not add any conditions or qualifying statements to this Proposal.

## SECTION F: BEST VALUE CONTRACTING

### HAYWOOD DRIVE RECONSTRUCTION ASSESSMENT DISTRICT - 2019 CONTRACT NO. 8297

#### Best Value Contracting

1. The Contractor shall indicate the non-apprenticeable trades used on this contract.

---

---

2. Madison General Ordinance (M.G.O.), 33.07(7), does provide for some exemptions from the active apprentice requirement. Apprenticeable trades are those trades considered apprenticeable by the State of Wisconsin. Please check applicable box if you are seeking an exemption.

- Contractor has a total skilled workforce of four or less individuals in all apprenticeable trades combined.
- No available trade training program; The Contractor has been rejected by the only available trade training program, or there is no trade training program within 90 miles.
- Contractor is not using an apprentice due to having a journey worker on layoff status, provided the journey worker was employed by the contractor in the past six months.
- First-time Contractor on City of Madison Public Works contract requests a onetime exemption but intends to comply on all future contracts and is taking steps typical of a "good faith" effort.
- Contractor has been in business less than one year.
- Contractor doesn't have enough journeyman trade workers to qualify for a trade training program in that respective trade.
- An exemption is granted in accordance with a time period of a "Documented Depression" as defined by the State of Wisconsin.

3. The Contractor shall indicate on the following section which apprenticeable trades are to be used on this contract. Compliance with active apprenticeship, to the extent required by M.G.O. 33.07(7), shall be satisfied by documentation from an applicable trade training body; an apprenticeship contract with the Wisconsin Department of Workforce Development or a similar agency in another state; or the U.S Department of Labor. This documentation is required prior to the Contractor beginning work on the project site.

- The Contractor has reviewed the list and shall not use any apprenticeable trades on this project.

**LIST APPRENTICABLE TRADES** (check all that apply to your work to be performed on this contract)

- BRICKLAYER
- CARPENTER
- CEMENT MASON / CONCRETE FINISHER
- CEMENT MASON (HEAVY HIGHWAY)
- CONSTRUCTION CRAFT LABORER
- DATA COMMUNICATION INSTALLER
- ELECTRICIAN
- ENVIRONMENTAL SYSTEMS TECHNICIAN / HVAC SERVICE TECH/HVAC INSTALL / SERVICE
- GLAZIER
- HEAVY EQUIPMENT OPERATOR / OPERATING ENGINEER
- INSULATION WORKER (HEAT & FROST)
- IRON WORKER
- IRON WORKER (ASSEMBLER, METAL BLDGS)
- PAINTER & DECORATOR
- PLASTERER
- PLUMBER
- RESIDENTIAL ELECTRICIAN
- ROOFER & WATER PROOFER
- SHEET METAL WORKER
- SPRINKLER FITTER
- STEAMFITTER
- STEAMFITTER (REFRIGERATION)
- STEAMFITTER (SERVICE)
- TAPER & FINISHER
- TELECOMMUNICATIONS (VOICE, DATA & VIDEO) INSTALLER-TECHNICIAN
- TILE SETTER

## **SECTION G: BID BOND**

KNOW ALL MEN BY THESE PRESENT, THAT Principal and Surety, as identified below, are held and firmly bound unto the City of Madison, (hereinafter referred to as the "Obligee"), in the sum of five per cent (5%) of the amount of the total bid or bids of the Principal herein accepted by the Obligee, for the payment of which the Principal and the Surety bind themselves, their heirs, executors, administrators, successors and assigns, jointly and severally, firmly by these presents.

The conditions of this obligation are such that, whereas the Principal has submitted, to the City of Madison a certain bid, including the related alternate, and substitute bids attached hereto and hereby made a part hereof, to enter into a contract in writing for the construction of:

### **HAYWOOD DRIVE RECONSTRUCTION ASSESSMENT DISTRICT - 2019 CONTRACT NO. 8297**

1. If said bid is rejected by the Obligee, then this obligation shall be void.
2. If said bid is accepted by the Obligee and the Principal shall execute and deliver a contract in the form specified by the Obligee (properly completed in accordance with said bid) and shall furnish a bond for his/her faithful performance of said contract, and for the payment of all persons performing labor or furnishing materials in connection therewith, and shall in all other respects perform the agreement created by the acceptance of said bid, then this obligation shall be void.

If said bid is accepted by the Obligee and the Principal shall fail to execute and deliver the contract and the performance and payment bond noted in 2. above executed by this Surety, or other Surety approved by the City of Madison, all within the time specified or any extension thereof, the Principal and Surety agree jointly and severally to forfeit to the Obligee as liquidated damages the sum mentioned above, it being understood that the liability of the Surety for any and all claims hereunder shall in no event exceed the sum of this obligation as stated, and it is further understood that the Principal and Surety reserve the right to recover from the Obligee that portion of the forfeited sum which exceed the actual liquidated damages incurred by the Obligee.

The Surety, for value received, hereby stipulates and agrees that the obligations of said Surety and its bond shall be in no way impaired or affected by an extension of the time within which the Obligee may accept such bid, and said Surety does hereby waive notice of any such extension.



IN WITNESS WHEREOF, the Principal and the Surety have hereunto set their hands and seals, and such of them as are corporations have caused their corporate seals to be hereto affixed and these presents to be signed by their proper officers, on the day and year set forth below.

Seal      PRINCIPAL

\_\_\_\_\_  
Name of Principal

\_\_\_\_\_  
By

\_\_\_\_\_  
Date

\_\_\_\_\_  
Name and Title

Seal      SURETY

\_\_\_\_\_  
Name of Surety

\_\_\_\_\_  
By

\_\_\_\_\_  
Date

\_\_\_\_\_  
Name and Title

This certifies that I have been duly licensed as an agent for the above company in Wisconsin under National Provider No. \_\_\_\_\_ for the year \_\_\_\_\_, and appointed as attorney in fact with authority to execute this bid bond and the payment and performance bond referred to above, which power of attorney has not been revoked.

\_\_\_\_\_  
Date

\_\_\_\_\_  
Agent Signature

\_\_\_\_\_  
Address

\_\_\_\_\_  
City, State and Zip Code

\_\_\_\_\_  
Telephone Number

**NOTE TO SURETY & PRINCIPAL**

The bid submitted which this bond guarantees shall be rejected if the following instrument is not attached to this bond:

Power of Attorney showing that the agent of Surety is currently authorized to execute bonds on behalf of the Surety, and in the amounts referenced above.

## Certificate of Biennial Bid Bond

TIME PERIOD - VALID (FROM/TO)
NAME OF SURETY
NAME OF CONTRACTOR
CERTIFICATE HOLDER <p style="text-align: center;">City of Madison, Wisconsin</p>

This is to certify that a biennial bid bond issued by the above-named Surety is currently on file with the City of Madison.

This certificate is issued as a matter of information and conveys no rights upon the certificate holder and does not amend, extend or alter the coverage of the biennial bid bond.

Cancellation: Should the above policy be cancelled before the expiration date, the issuing Surety will give thirty (30) days written notice to the certificate holder indicated above.

\_\_\_\_\_  
Signature of Authorized Contractor Representative

\_\_\_\_\_  
Date

## SECTION H: AGREEMENT

THIS AGREEMENT made this \_\_\_\_\_ day of \_\_\_\_\_ in the year Two Thousand and Nineteen between \_\_\_\_\_ hereinafter called the Contractor, and the City of Madison, Wisconsin, hereinafter called the City.

WHEREAS, the Common Council of the said City of Madison under the provisions of a resolution adopted \_\_\_\_\_, and by virtue of authority vested in the said Council, has awarded to the Contractor the work of performing certain construction.

NOW, THEREFORE, the Contractor and the City, for the consideration hereinafter named, agree as follows:

1. **Scope of Work.** The Contractor shall, perform the construction, execution and completion of the following listed complete work or improvement in full compliance with the Plans, Specifications, Standard Specifications, Supplemental Specifications, Special Provisions and contract; perform all items of work covered or stipulated in the proposal; perform all altered or extra work; and shall furnish, unless otherwise provided in the contract, all materials, implements, machinery, equipment, tools, supplies, transportation, and labor necessary to the prosecution and completion of the work or improvements:

### HAYWOOD DRIVE RECONSTRUCTION ASSESSMENT DISTRICT - 2019 CONTRACT NO. 8297

2. **Completion Date/Contract Time.** Construction work must begin within seven (7) calendar days after the date appearing on mailed written notice to do so shall have been sent to the Contractor and shall be carried on at a rate so as to secure full completion SEE SPECIAL PROVISIONS, the rate of progress and the time of completion being essential conditions of this Agreement.
3. **Contract Price.** The City shall pay to the Contractor at the times, in the manner and on the conditions set forth in said specifications, the sum of \_\_\_\_\_ (\$ \_\_\_\_\_) Dollars being the amount bid by such Contractor and which was awarded to him/her as provided by law.
4. **Affirmative Action.** In the performance of the services under this Agreement the Contractor agrees not to discriminate against any employee or applicant because of race, religion, marital status, age, color, sex, disability, national origin or ancestry, income level or source of income, arrest record or conviction record, less than honorable discharge, physical appearance, sexual orientation, gender identity, political beliefs, or student status. The Contractor further agrees not to discriminate against any subcontractor or person who offers to subcontract on this contract because of race, religion, color, age, disability, sex, sexual orientation, gender identity or national origin.

The Contractor agrees that within thirty (30) days after the effective date of this agreement, the Contractor will provide to the City Affirmative Action Division certain workforce utilization statistics, using a form to be furnished by the City.

If the contract is still in effect, or if the City enters into a new agreement with the Contractor, within one year after the date on which the form was required to be provided, the Contractor will provide updated workforce information using a second form, also to be furnished by the City. The second form will be submitted to the City Affirmative Action Division no later than one year after the date on which the first form was required to be provided.

The Contractor further agrees that, for at least twelve (12) months after the effective date of this contract, it will notify the City Affirmative Action Division of each of its job openings at facilities in Dane County for which applicants not already employees of the Contractor are to be considered. The notice will include a job description, classification, qualifications and application procedures

and deadlines. The Contractor agrees to interview and consider candidates referred by the Affirmative Action Division if the candidate meets the minimum qualification standards established by the Contractor, and if the referral is timely. A referral is timely if it is received by the Contractor on or before the date started in the notice.

#### Articles of Agreement Article I

The Contractor shall take affirmative action in accordance with the provisions of this contract to insure that applicants are employed, and that employees are treated during employment without regard to race, religion, color, age, marital status, disability, sex, sexual orientation, gender identity or national origin and that the employer shall provide harassment free work environment for the realization of the potential of each employee. Such action shall include, but not be limited to, the following: employment, upgrading, demotion or transfer, recruitment or recruitment advertising, layoff or termination, rates of pay or other forms of compensation and selection for training including apprenticeship insofar as it is within the control of the Contractor. The Contractor agrees to post in conspicuous places available to employees and applicants notices to be provided by the City setting out the provisions of the nondiscrimination clauses in this contract.

#### Article II

The Contractor shall in all solicitations or advertisements for employees placed by or on behalf of the Contractors state that all qualified or qualifiable applicants will be employed without regard to race, religion, color, age, marital status, disability, sex, sexual orientation, gender identity or national origin.

#### Article III

The Contractor shall send to each labor union or representative of workers with which it has a collective bargaining agreement or other contract or understanding a notice to be provided by the City advising the labor union or worker's representative of the Contractor's equal employment opportunity and affirmative action commitments. Such notices shall be posted in conspicuous places available to employees and applicants for employment.

#### Article V

The Contractor agrees that it will comply with all provisions of the Affirmative Action Ordinance of the City of Madison, including the contract compliance requirements. The Contractor agrees to submit the model affirmative action plan for public works contractors in a form approved by the Affirmative Action Division Manager.

#### Article VI

The Contractor will maintain records as required by Section 39.02(9)(f) of the Madison General Ordinances and will provide the City Affirmative Action Division with access to such records and to persons who have relevant and necessary information, as provided in Section 39.02(9)(f). The City agrees to keep all such records confidential, except to the extent that public inspection is required by law.

#### Article VII

In the event of the Contractor's or subcontractor's failure to comply with the Equal Employment Opportunity and Affirmative Action Provisions of this contract or Section 39.03 and 39.02 of the Madison General Ordinances, it is agreed that the City at its option may do any or all of the following:

1. Cancel, terminate or suspend this Contract in whole or in part.

2. Declare the Contractor ineligible for further City contracts until the Affirmative Action requirements are met.
3. Recover on behalf of the City from the prime Contractor 0.5 percent of the contract award price for each week that such party fails or refuses to comply, in the nature of liquidated damages, but not to exceed a total of five percent (5%) of the contract price, or ten thousand dollars (\$10,000), whichever is less. Under public works contracts, if a subcontractor is in noncompliance, the City may recover liquidated damages from the prime Contractor in the manner described above. The preceding sentence shall not be construed to prohibit a prime Contractor from recovering the amount of such damage from the non-complying subcontractor.

#### Article VIII

The Contractor shall include the above provisions of this contract in every subcontract so that such provisions will be binding upon each subcontractor. The Contractor shall take such action with respect to any subcontractor as necessary to enforce such provisions, including sanctions provided for noncompliance.

#### Article IX

The Contractor shall allow the maximum feasible opportunity to small business enterprises to compete for any subcontracts entered into pursuant to this contract. (In federally funded contracts the terms "DBE, MBE and WBE" shall be substituted for the term "small business" in this Article.)

5. Substance Abuse Prevention Program Required. Prior to commencing work on the Contract, the Contractor, and any Subcontractor, shall have in place a written program for the prevention of substance abuse among its employees as required under Wis. Stat. Sec. 103.503.
6. **Contractor Hiring Practices.**

##### **Ban the Box - Arrest and Criminal Background Checks. (Sec. 39.08, MGO)**

This provision applies to all prime contractors on contracts entered into on or after January 1, 2016, and all subcontractors who are required to meet prequalification requirements under MGO 33.07(7)(l), MGO as of the first time they seek or renew pre-qualification status on or after January 1, 2016. The City will monitor compliance of subcontractors through the pre-qualification process.

- a. **Definitions.** For purposes of this section, "Arrest and Conviction Record" includes, but is not limited to, information indicating that a person has been questioned, apprehended, taken into custody or detention, held for investigation, arrested, charged with, indicted or tried for any felony, misdemeanor or other offense pursuant to any law enforcement or military authority.

"Conviction record" includes, but is not limited to, information indicating that a person has been convicted of a felony, misdemeanor or other offense, placed on probation, fined, imprisoned or paroled pursuant to any law enforcement or military authority.

"Background Check" means the process of checking an applicant's arrest and conviction record, through any means.

- b. **Requirements.** For the duration of this Contract, the Contractor shall:
  1. Remove from all job application forms any questions, check boxes, or other inquiries regarding an applicant's arrest and conviction record, as defined herein.

2. Refrain from asking an applicant in any manner about their arrest or conviction record until after conditional offer of employment is made to the applicant in question.
3. Refrain from conducting a formal or informal background check or making any other inquiry using any privately or publicly available means of obtaining the arrest or conviction record of an applicant until after a conditional offer of employment is made to the applicant in question.
4. Make information about this ordinance available to applicants and existing employees, and post notices in prominent locations at the workplace with information about the ordinance and complaint procedure using language provided by the City.
5. Comply with all other provisions of Sec. 39.08, MGO.

**c. Exemptions:** This section shall not apply when:

1. Hiring for a position where certain convictions or violations are a bar to employment in that position under applicable law, or
2. Hiring a position for which information about criminal or arrest record, or a background check is required by law to be performed at a time or in a manner that would otherwise be prohibited by this ordinance, including a licensed trade or profession where the licensing authority explicitly authorizes or requires the inquiry in question.

To be exempt, Contractor has the burden of demonstrating that there is an applicable law or regulation that requires the hiring practice in question, if so, the contractor is exempt from all of the requirements of this ordinance for the position(s) in question.

**HAYWOOD DRIVE RECONSTRUCTION ASSESSMENT DISTRICT - 2019  
CONTRACT NO. 8297**

IN WITNESS WHEREOF, the Contractor has hereunto set his/her hand and seal and the City has caused this contract to be sealed with its corporate seal and to be executed by its Mayor and City Clerk on the dates written below.

Countersigned:

	_____
	Company Name
Witness	Date
Witness	Date

	_____
	President
	Date

	_____
	Secretary
	Date

CITY OF MADISON, WISCONSIN

Provisions have been made to pay the liability that will accrue under this contract.

Approved as to form:

	_____
	City Attorney
Finance Director	Date
Witness	Date
Witness	Date

	_____
	Mayor
	Date
	Date

**SECTION I: PAYMENT AND PERFORMANCE BOND**

KNOW ALL MEN BY THESE PRESENTS, that we \_\_\_\_\_  
as principal, and \_\_\_\_\_  
Company of \_\_\_\_\_ as surety, are held and firmly bound unto the City of  
Madison, Wisconsin, in the sum of \_\_\_\_\_ (\$\_\_\_\_\_) Dollars, lawful money of the United  
States, for the payment of which sum to the City of Madison, we hereby bind ourselves and our  
respective executors and administrators firmly by these presents.

The condition of this Bond is such that if the above bounden shall on his/her part fully and faithfully  
perform all of the terms of the Contract entered into between him/herself and the City of Madison for the  
construction of:

**HAYWOOD DRIVE RECONSTRUCTION ASSESSMENT DISTRICT - 2019  
CONTRACT NO. 8297**

in Madison, Wisconsin, and shall pay all claims for labor performed and material furnished in the  
prosecution of said work, and save the City harmless from all claims for damages because of negligence  
in the prosecution of said work, and shall save harmless the said City from all claims for compensation  
(under Chapter 102, Wisconsin Statutes) of employees and employees of subcontractor, then this Bond is  
to be void, otherwise of full force, virtue and effect.

Signed and sealed this \_\_\_\_\_ day of \_\_\_\_\_

Countersigned:

\_\_\_\_\_  
Company Name (Principal)

\_\_\_\_\_  
Witness

\_\_\_\_\_  
President Seal

\_\_\_\_\_  
Secretary

Approved as to form:

\_\_\_\_\_  
Surety Seal  
 Salary Employee       Commission

\_\_\_\_\_  
City Attorney

By \_\_\_\_\_  
Attorney-in-Fact

This certifies that I have been duly licensed as an agent for the above company in Wisconsin under  
National Producer Number \_\_\_\_\_ for the year \_\_\_\_\_, and appointed as attorney-in-fact  
with authority to execute this payment and performance bond which power of attorney has not been  
revoked.

\_\_\_\_\_  
Date

\_\_\_\_\_  
Agent Signature